



**FOREST
RESILIENCE
BOND**

The Forest Resilience Bond

A Mechanism for Collaboration

November 29, 2023

BLUE  FOREST
CONSERVATION

Path to Overgrown Forests

1890



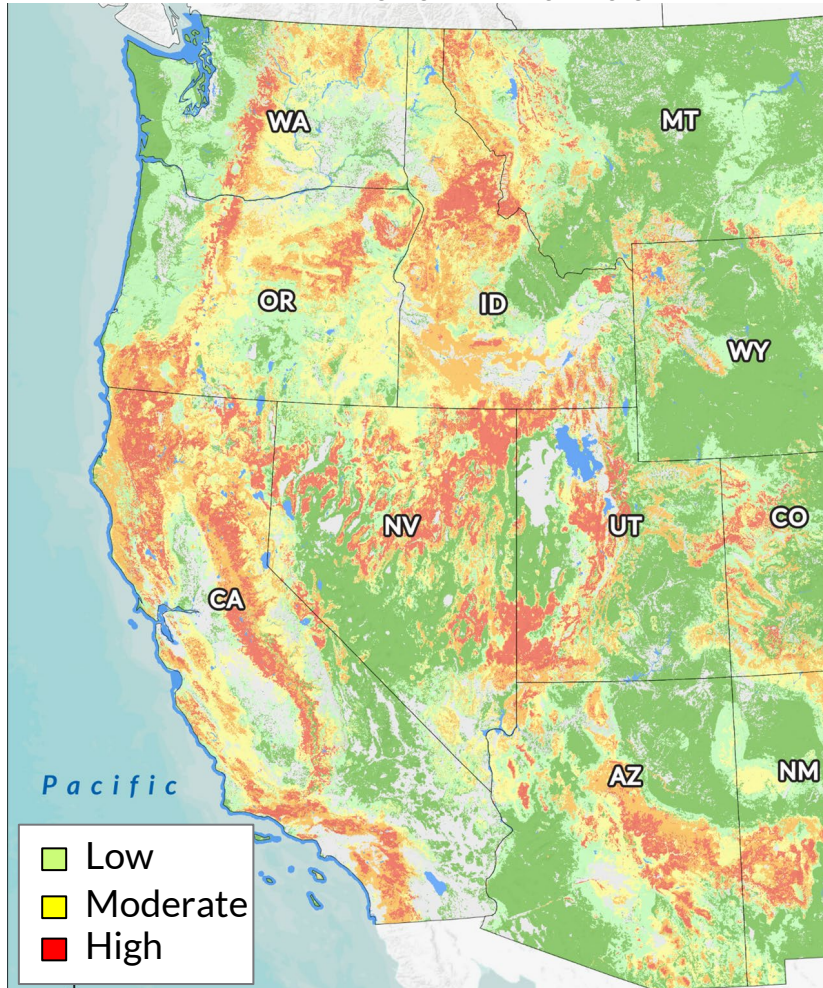
1993



Photo Credit: George E. Gruell, Fires in the Sierra Nevada, 2001

Forests & Communities at Risk

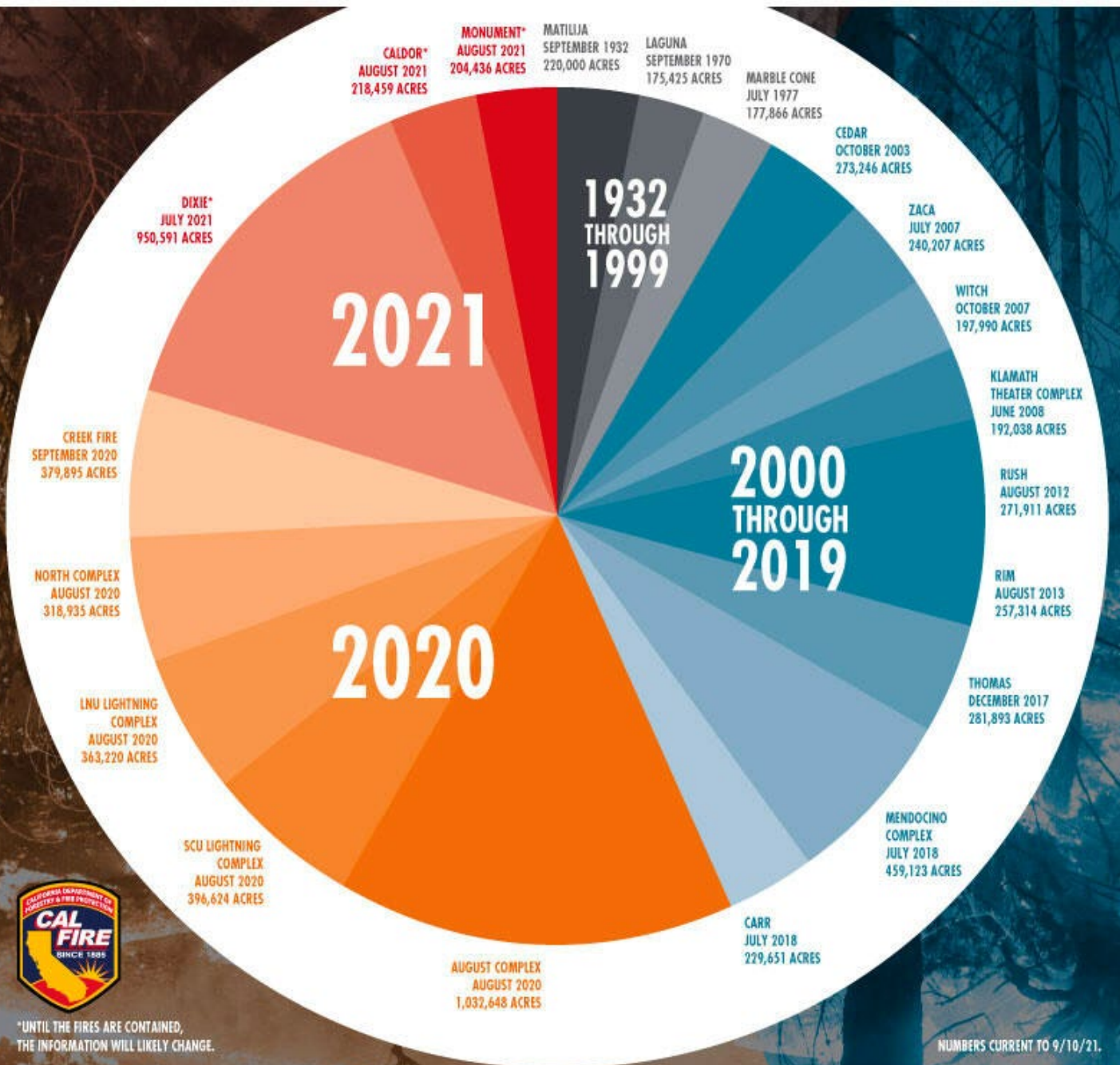
Wildfire Hazard Potential



A Growing Crisis

- ▶ 58 million acres at moderate to high wildfire risk
- ▶ Over \$220 billion of property at extreme risk
- ▶ 4.5 million homes at high to extreme risk
- ▶ \$76-130 billion long-term annual health risk
- ▶ 60 million people depend on National Forest lands for water supply
- ▶ California forests becoming net carbon emitters

TOP 20 LARGEST CALIFORNIA WILDFIRES

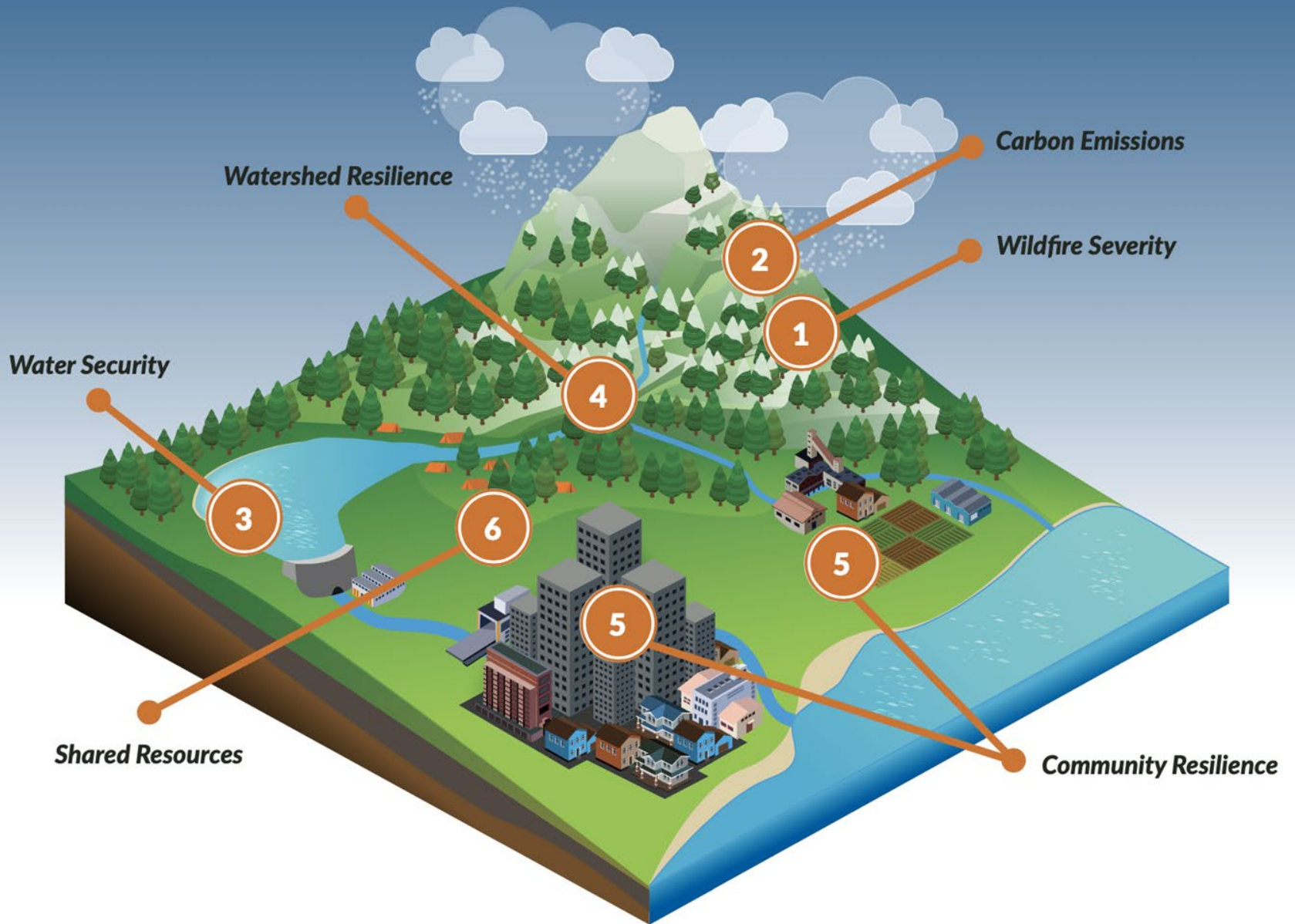


> 50% of acres burned in large CA wildfires over the last 90 years burned in 2020-2022



*UNTIL THE FIRES ARE CONTAINED, THE INFORMATION WILL LIKELY CHANGE.

NUMBERS CURRENT TO 9/10/21.



Extending Infrastructure Finance to Nature



Transportation
Bonds



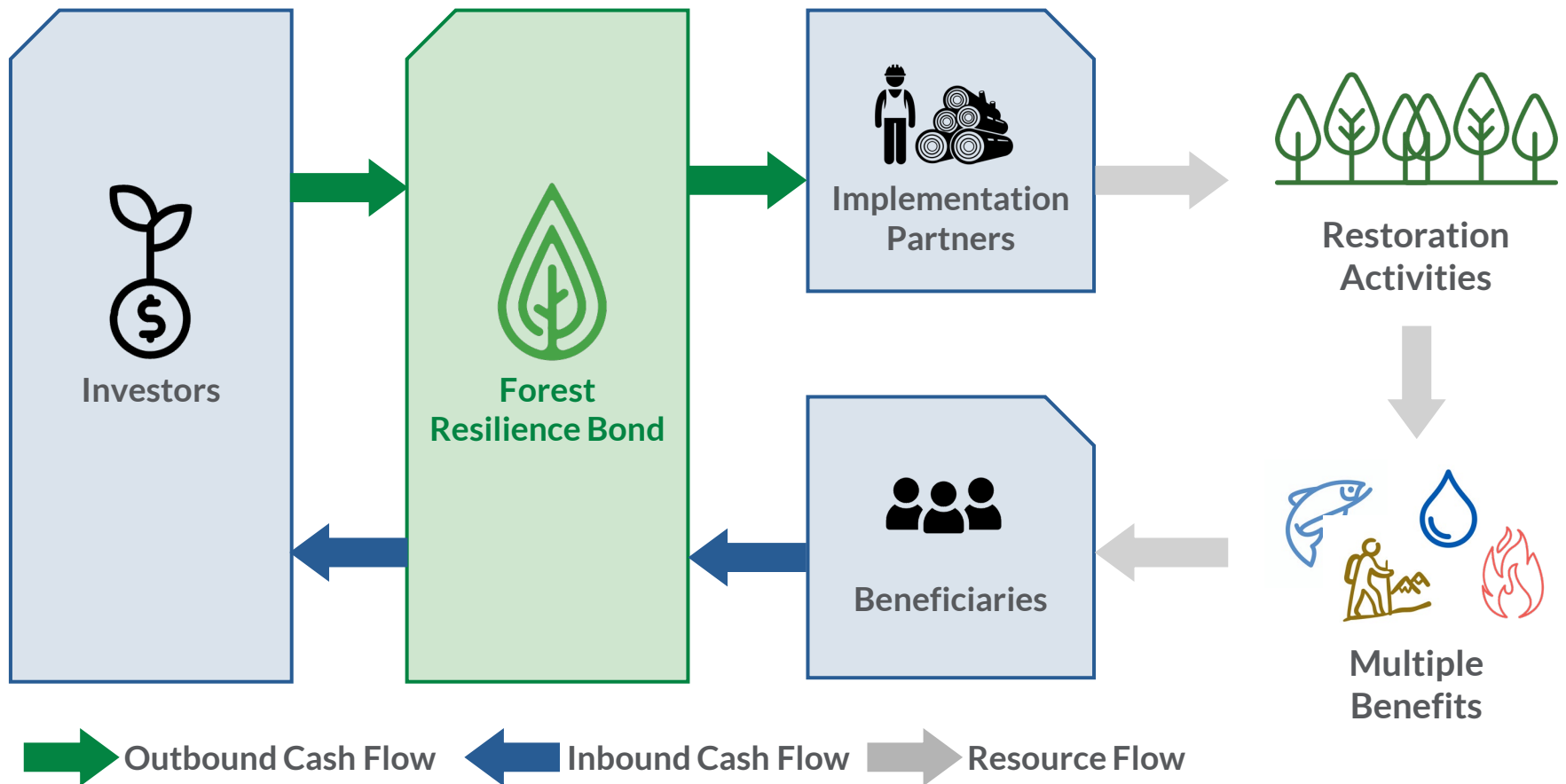
Power
Infrastructure



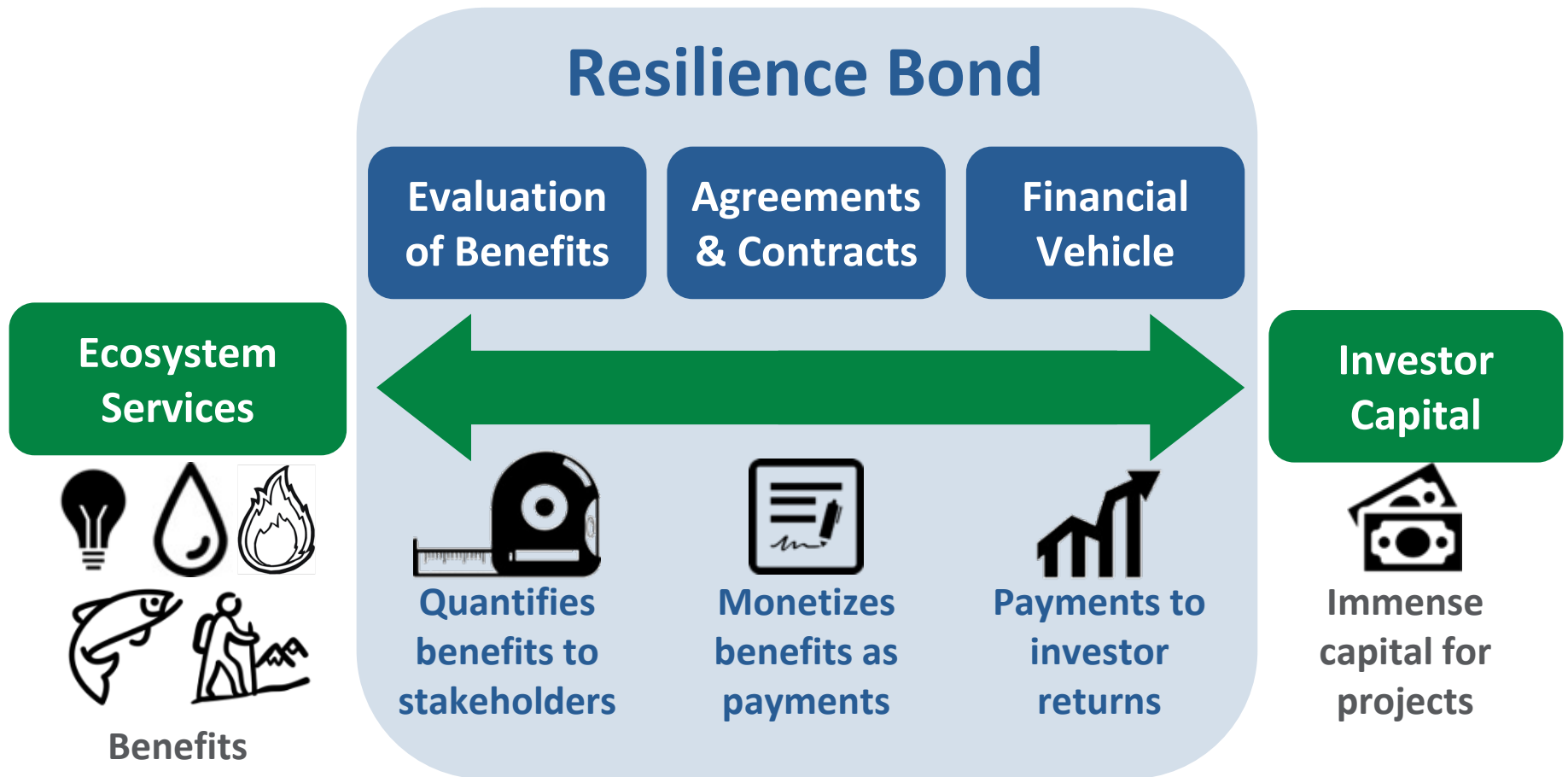
Water
Treatment

Financing natural infrastructure can resource ecosystem projects with long-term benefits

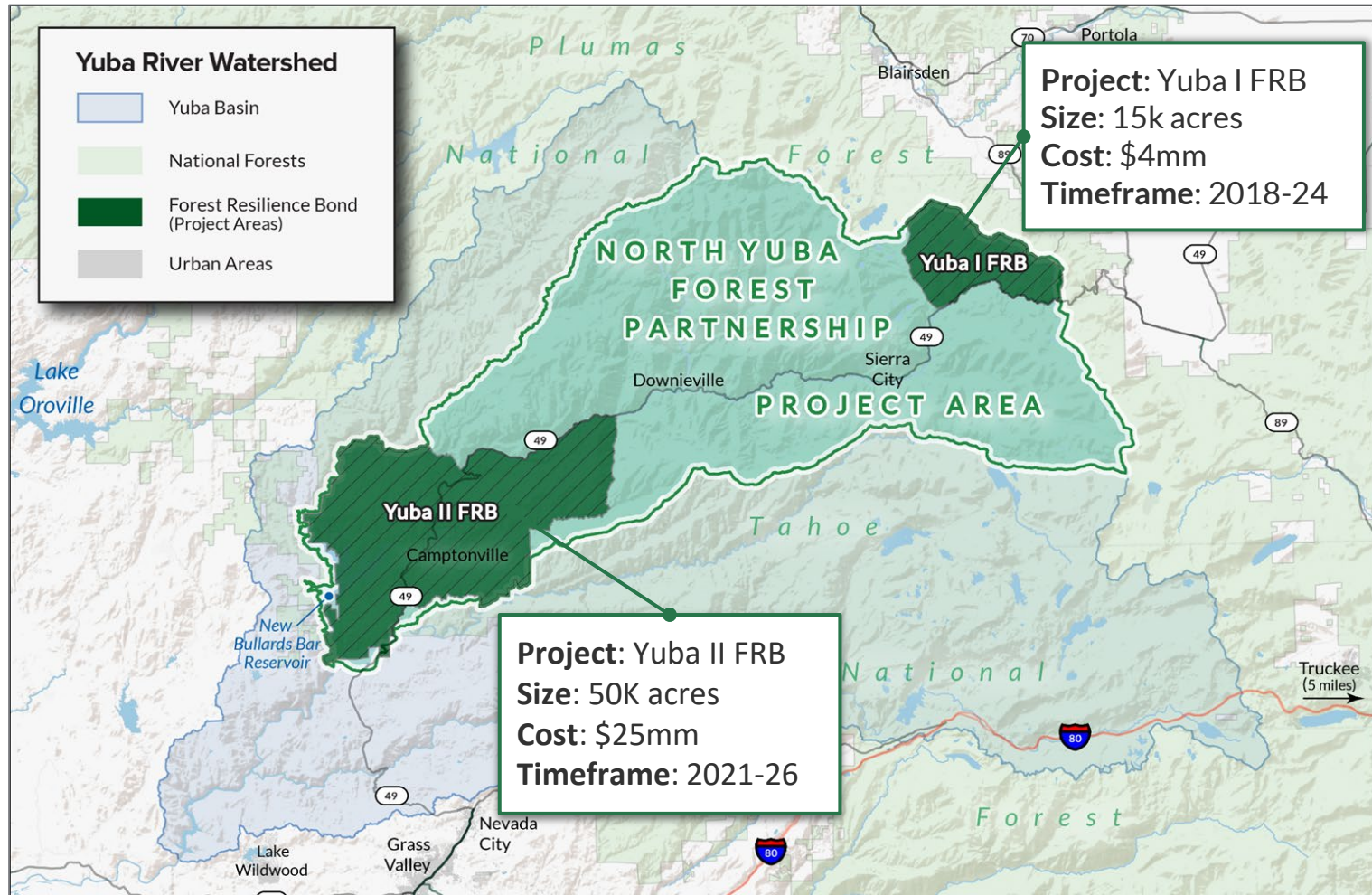
The Forest Resilience Bond Flow of Funds



Connecting Capital to Conservation



North Yuba Forest Partnership - Community Led



Local Partner Led Collaborations





BLUE FOREST
CONSERVATION
Financial Innovation for Sustainable Solutions

Nick Wobbrock
Blue Forest
Co-Founder & COO
nick@blueforest.org