

Annie Firomski

Manitoba Métis Federation

# A Red River Métis Perspective on the Importance of Local Involvement



# The Manitoba Métis Federation



# Who are the Red River Métis

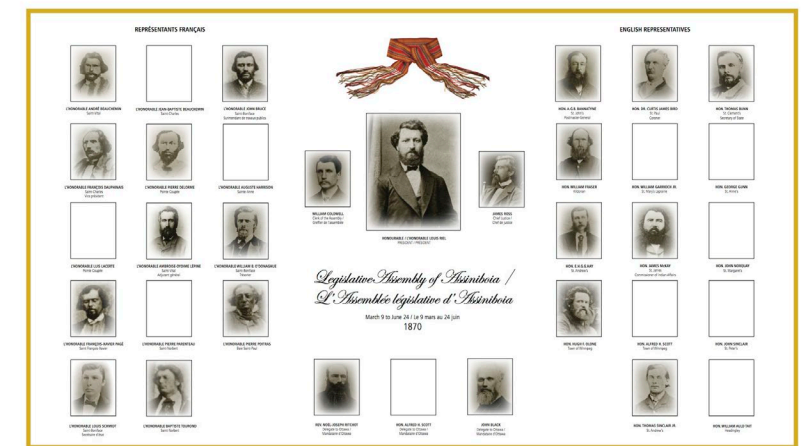
- Definition – Red River Métis: “is one of the Aboriginal Peoples of Canada referred to in section 35 of the *Constitution Act, 1982*;
- Furthermore, it is comprised of the Métis collectivity that was historically known as the ‘**Red River Métis**’ who are located inside and outside of Canada.
- Red River Métis emerged from, and lived in, the historic Northwest, and this territory is referred to today as the Red River Métis Homeland.



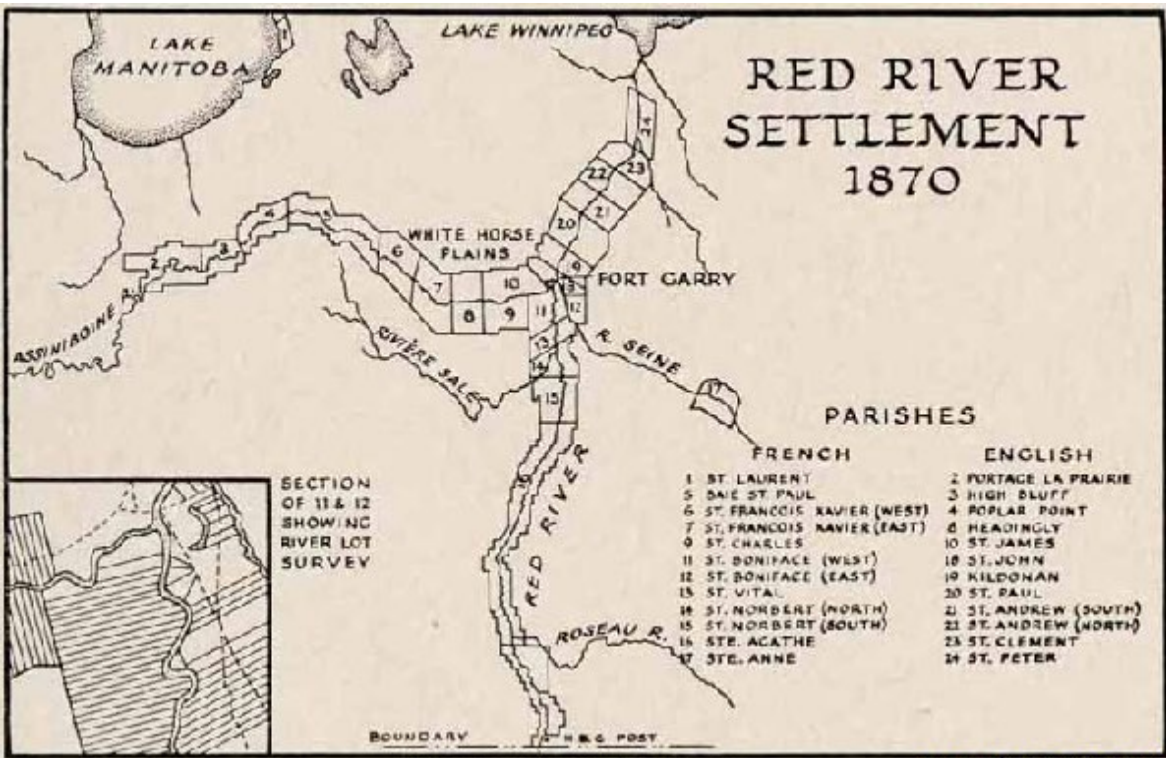
# Who are the Red River Métis?

## The Métis Government

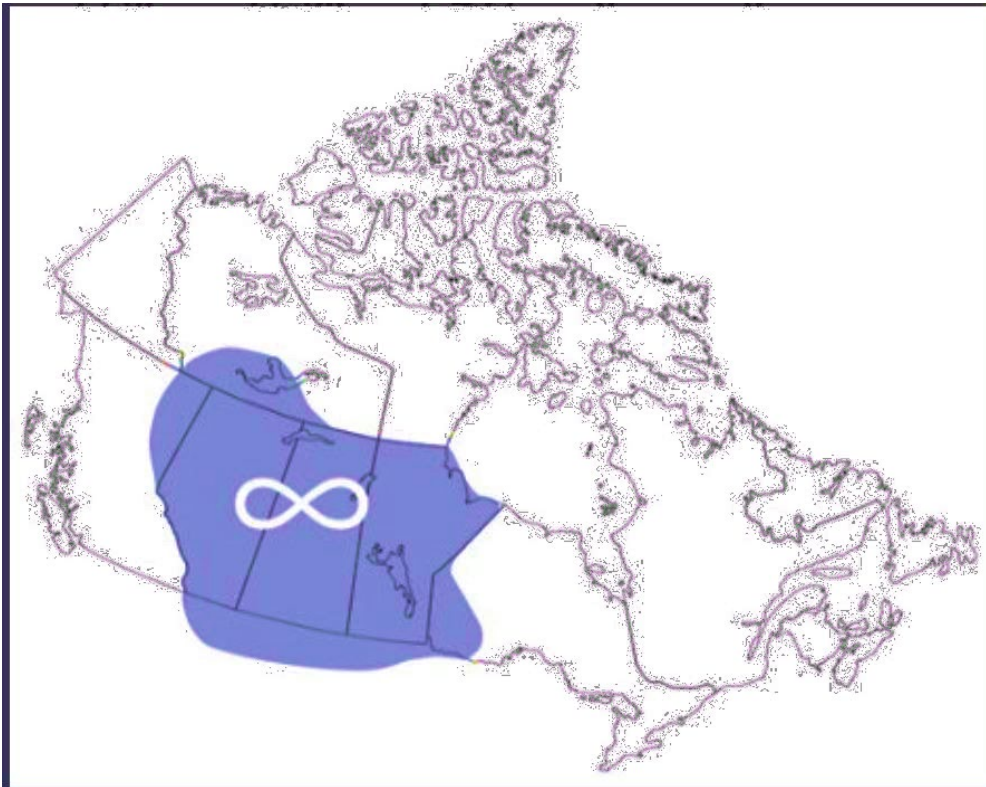
- The Manitoba Métis Federation is the National Government of the Red River Métis, and the first federally recognized Métis government in Canada.
- The MMF is duly authorized, by its Citizens, for the purposes of dealing with their collective Métis rights, claims and interests including conducting consultations and negotiating accommodations as per MMF Resolution 8.



# National Homeland of the Red River Métis



Courtesy of Provincial Archives of Manitoba. [www.vivaorange.com](http://www.vivaorange.com)





# Manitoba Métis Self-Government Recognition and Implementation Agreement

---



# Importance of Local Involvement



# Importance of the Environment

Historically, the Red River Métis were strong in the trading industry relying on close connections to the lands, waters, and environment for both livelihood and sustenance. Therefore, it was, and still is, imperative that the Red River Métis work to protect the environment for today and for future generations.





# Challenges of Climate Change

The Red River Métis have, and continue to, notice evident changes to the environment throughout the National Homeland as a direct result of climate change. Priority topics highlighted by Citizens include:

- Water Quality Monitoring
- Wildlife-Ecosystem Conservation & Management
- Weather Monitoring
- Educational Programming
- Community Resiliency
- Habitat Restoration
- Clean Energy Development



# Red River Métis Stewards of the Homeland

Throughout the duration of this program, the following has been accomplished:

- Engagement with Citizens through consultation;
- Seed collection workshops;
- Tree planting;
- Clean-up initiatives;
- Historic trail maintenance; and
- Collaboration on a Spawning Study Project and Blueberry Analysis Project in the Kettle Hills.



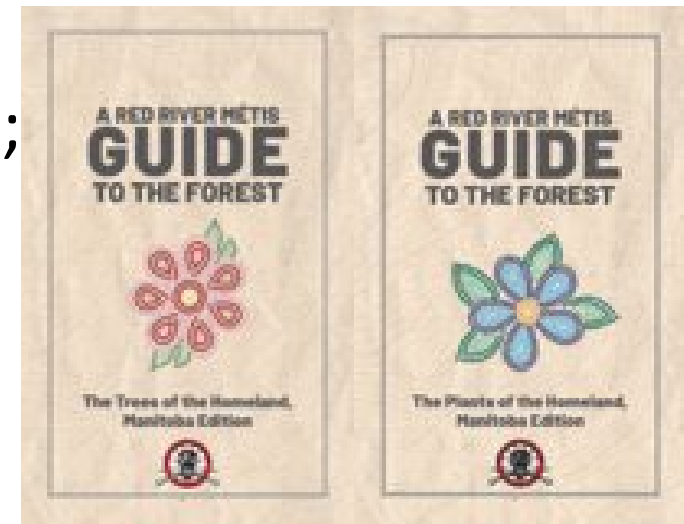
RED RIVER MÉTIS  
**STEWARDS**  
OF THE  
**HOMELAND**



# Métis Community-Based Climate Monitoring Program

MCBCM focuses on providing a network of opportunities for Red River Métis Citizen Scientists to participate in:

- Environmental monitoring initiatives and projects;
- Creating environmental resources; and
- Hosting educational land-based events!



# Métis Community-Based Climate Monitoring Program

Available programming includes:

- Water and Wetland Monitoring
- Winter Monitoring
- Bird Monitoring
- Monarch Monitoring
- Weather Keeper Program



# Métis Environmental Leaders of Tomorrow (MELT)

- Land-based education events for Red River Métis Youth with a focus on climate education
- Giving Youth the tools needed to turn climate education into climate action



# MELT

Métis Environmental Leaders of Tomorrow



# Métis Climate Leadership

Federal departments are working with the Manitoba Métis Federation to adjust programs and policies under Canada's Climate Plan.

Focus on advancement of Red River Métis climate change and related health priorities and shaping community-based climate initiatives.

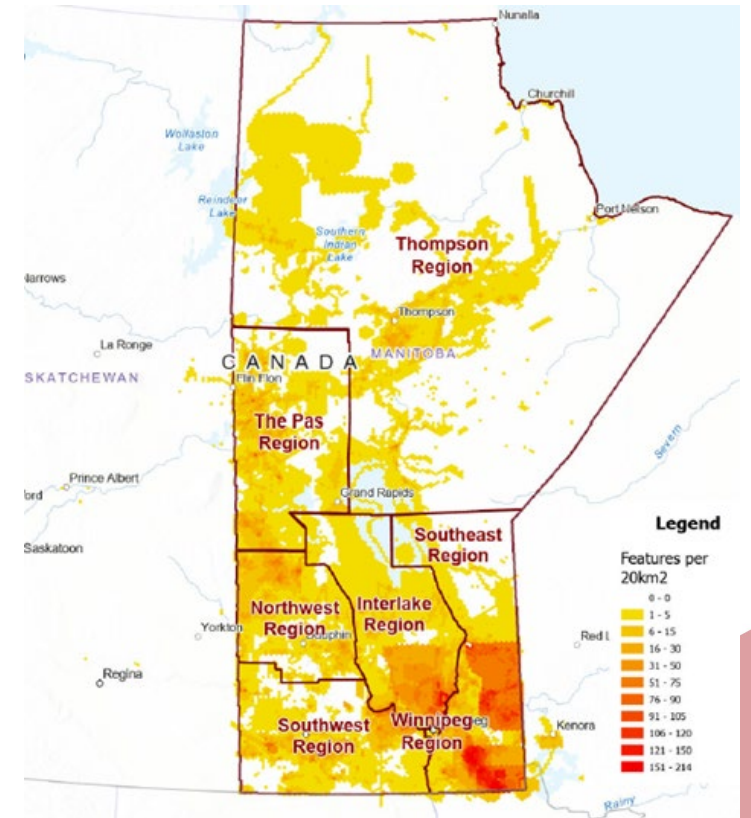
## **Priorities:**

- Capacity-building
- Conducting Research & Collecting Data to Guide Métis Policy
- Education and Training Opportunities
- Environmental Stewardship
- Emergency Management and Disaster-Risk Mitigation



# Métis Knowledge Land-Use and Occupancy Studies

- Land-use data held by Red River Métis is being recorded to:
  - Help determine how Red River Métis rights, claims, and interests have been impacted by development projects
  - Inform the design of environmental monitoring programs and protocols



# Moving Forward

The MMF will continue to establish and explore traditional methods of stewardship with a Citizen and community-based focus to cultivate a future that allows for the continued and lasting culture of Red River Métis across the National Homeland while also continuing to engage and collaborate with government.





# Thank you!

Questions?

Please contact me at  
[annie.firomski@mmf.mb.ca](mailto:annie.firomski@mmf.mb.ca)

