

Food Waste Prevention, Reduction & Recycling at Ahold Delhaize USA

Christine Gallagher,
Manager Environmental Sustainability

March 31, 2021

Great Local Brands of
Ahold Delhaize | USA



Local Impact, Greater Purpose



**Healthier
Choices and
Personalized
Guidance**



**Transparency &
Sustainable
Products**



**Eliminating
Hunger & Waste**



**Setting Science
Based Targets
for Climate
Action**

Food Waste Reduction is a Priority



10X20X30



WORLD
RESOURCES
INSTITUTE




The Consumer Goods
FORUM

CHAMPIONS 12.3

FOOD WASTE
REDUCTION ALLIANCE



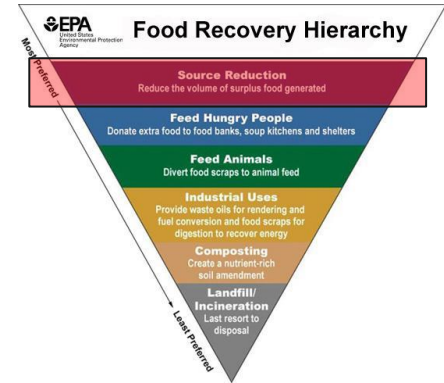
Food Waste Prevention



RELEX

Demand forecasting
Automatic replenishment & allocation

1



- 1 Better ordering
- 2 Cold chain integrity
- 3 Repurpose unsold product

2

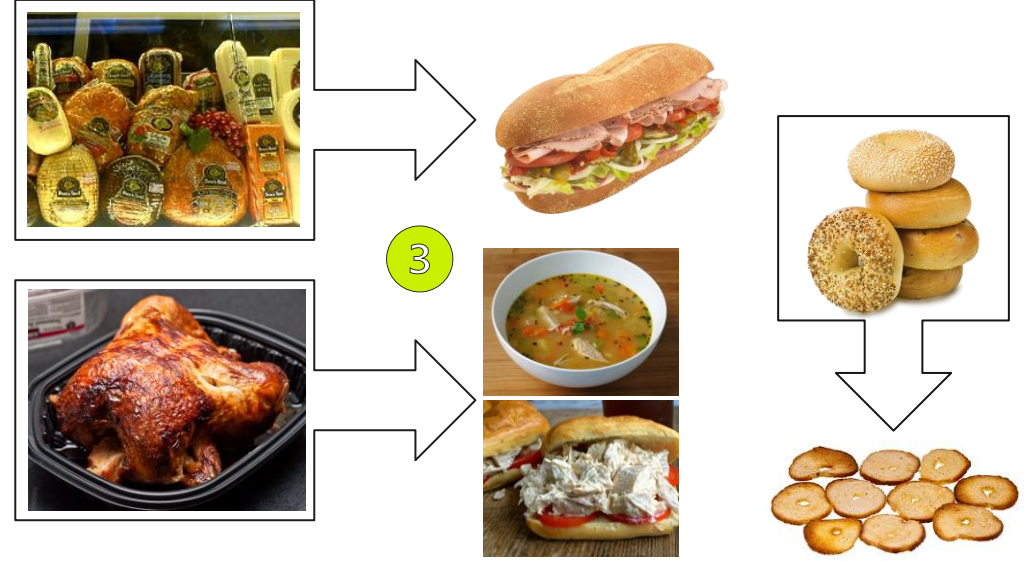
divert FRESHER

Providing end-to-end visibility of the food supply chain

Fresher has developed a cold supply chain technology that provides stores with information on product freshness and how they are managed in the supply chain. This solution identifies opportunities where freshness may be impacted.




Track fresh product movement with real-time corrective actions



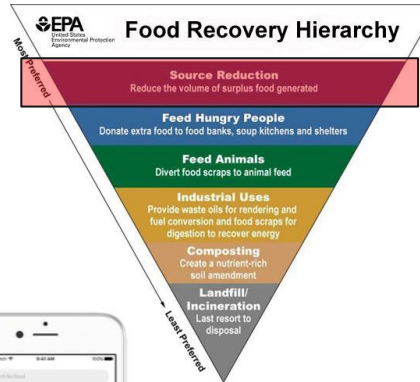
Food Waste Prevention



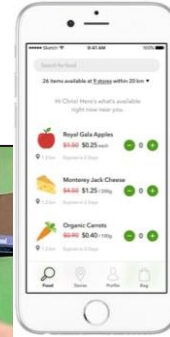
1



- 1 Fresher produce
- 2 Sell discounted product



flashfood



2

Progressive GROCER



Giant Co. Expands Flashfood Partnership

Brigitte Goldschmidt
Managing Editor

After a successful pilot program this past spring at four Lancaster, Pennsylvania, stores earlier this year, The Giant Co. will expand its partnership with the Flashfood app to another 33 stores this month. Flashfood enables customers to buy fresh produce, meat, deli and bakery products nearing their best-before date at significantly lower prices.

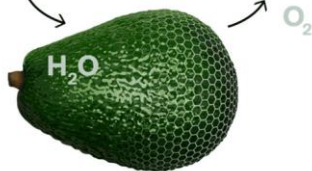
"We understand that family budgets are tight, even more so in recent months, which often impacts accessibility to fresh

A Giant store in Ephrata, Pennsylvania, one of the locations where the Flashfood app is now available.

Providing a little extra peel

MOISTURE STAYS INSIDE

AIR STAYS OUTSIDE



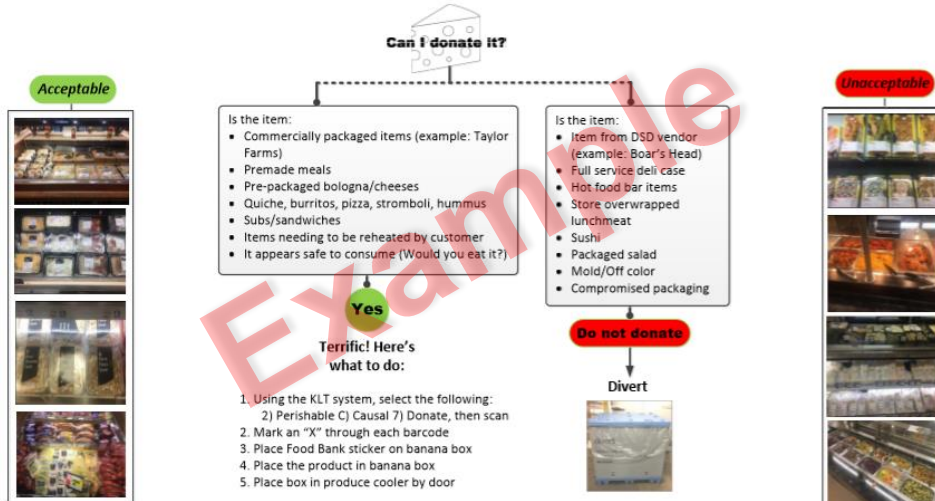
From strawberries to peppers, every fruit and vegetable has a protective peel or skin that nature uses to keep it fresh. Made from plants, Apeel adds a little extra "peel" to the surface of fresh produce to slow water loss and oxidation – the factors that cause spoilage.

Food Waste Reduction



Deli/Prepared Donation Handling Procedure

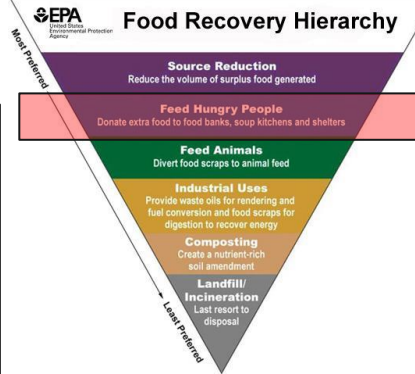
Remember to manage inventory responsibly to reduce shrink



Bunz'l Food Bank Sticker Order # 277778

When in doubt refer back to SOP

Procedure 01-014 Donation Tree



"Meat the Needs"



3 days	9 days	21 days	25 days	60 days
<ul style="list-style-type: none"> Fluid dairy (Milk, half and half, etc.) Yogurt, sour cream, cottage cheese Refrigerated Juice (Pasteurized Juices) Soy Milk 	<ul style="list-style-type: none"> Cream Cheese Soft Cheese 	<ul style="list-style-type: none"> Eggs 	<ul style="list-style-type: none"> Butter Margarine Hard Cheese 	<ul style="list-style-type: none"> Frozen Food Non-Perishable Grocery

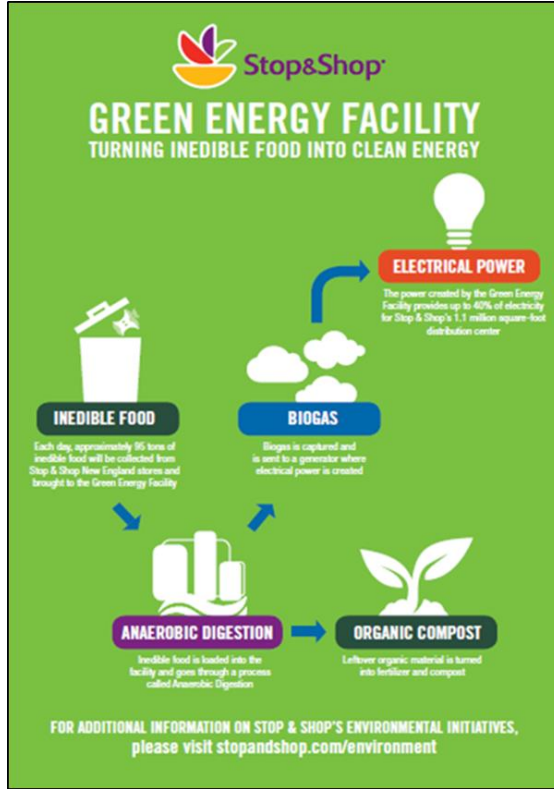


Food Waste Recycling



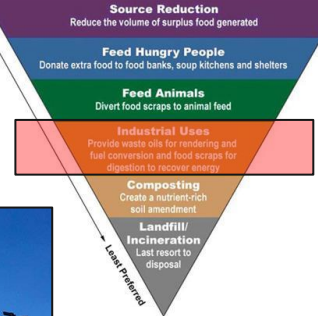
Stop&Shop
GREEN ENERGY FACILITY

TURNING INEDIBLE FOOD INTO CLEAN ENERGY



Food Recovery Hierarchy

Most Preferred



divert

Associate Engagement

Sustainability Steward

Formerly known as the "Green Captain". We're asking for each store to recruit a person of passion to be the champion of your store – *more details to come at a later date.*

Stewardship Candidates;

- Are committed and passionate about our sustainability journey
- Have our associates and customers health & well-being as a top priority
- Are committed to the betterment of our communities we serve and the impact on our environment

Stewardship Includes;

- Drive and support Total Waste Diversion initiatives following the Food Recovery Hierarchy pyramid
- Supporting store operations on recycling guidelines and best practices
- Sharing feedback to leadership from customers and associates on our journey to total waste diversion



Sustainability Leader Training

What is a Sustainability Leader?

The Sustainability Leader (formerly Green Captain) is a member of the exempt team in each store that, with the assistance of his/her Sustainability Team, will support, guide and focus associate efforts around donation and recycling programs

The Sustainability Leader in each store should be a member of the management team across the entire brand. This provides us with the following benefits:

- Clear visibility as to who the Sustainability Leader is in each store and that each store has an associate consistently in the Sustainability Leader role, ensuring they are not absent due to relocation, promotion, etc.
- More efficient communication with the Sustainability Leaders since there will be a consistent point of contact in all stores
- Accountability for in-store execution in all departments of Health and Sustainability programs around:



- Donations
- Recycling
- Waste Reduction
- Markdowns / KLT



Green Captain Role

- > The Green Captain is a member of the management team in each store that, with the assistance of his/her Green Team, will support, guide and focus associate efforts around Better Neighbor programs, thereby driving responsible retailing at store level.
- > The Green Captain in each store is the same role (i.e., Perishable Mgr) across the entire brand. This provides us with the following benefits:
 - Clear visibility as to who the Green Captain is in each store and that each store has an associate consistently in the Green Captain role, ensuring they are not absent due to relocation, promotion, etc.
 - More efficient communication with the Green Captains since there will be a consistent point of contact in all stores
 - Accountability for in-store execution of responsible retailing programs



Merci!

Gracias!

Thank You!

**Great Local Brands of
Ahold Delhaize | USA**

