

# Roles and Responsibility for NBS Monitoring

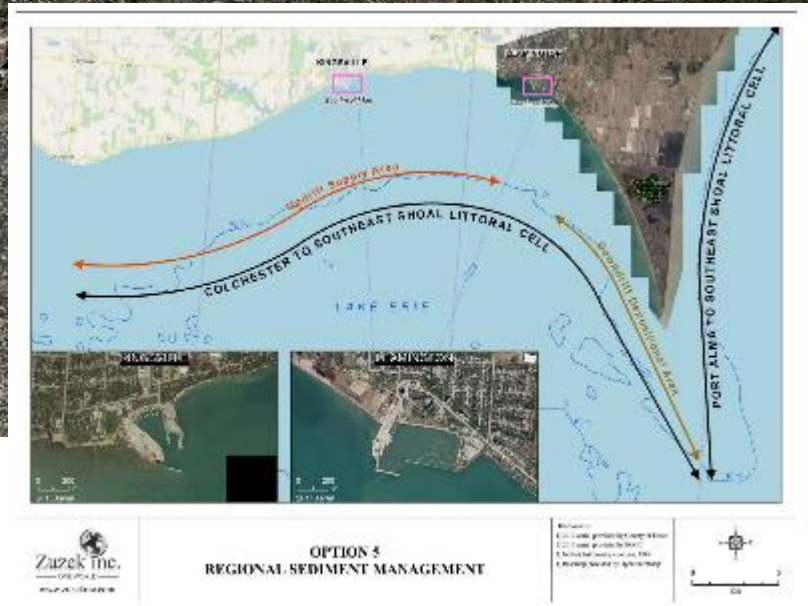
Chris Houser  
School of the Environment  
University of Windsor



University  
of Windsor  
Faculty of Science



# Point Pelee





# Point Pelee



# Next Steps and Questions

Do we have sufficient information about the sediment transport pathways, sources and sinks?

How have and will these pathways change with higher water levels, increased storm activity and loss of ice?

Need to implement a solution means that these questions will be answered in parallel to any NBS

**What current or past NBS project is similar in scope, scale and environment to this site?**





# Santa Rosa Island

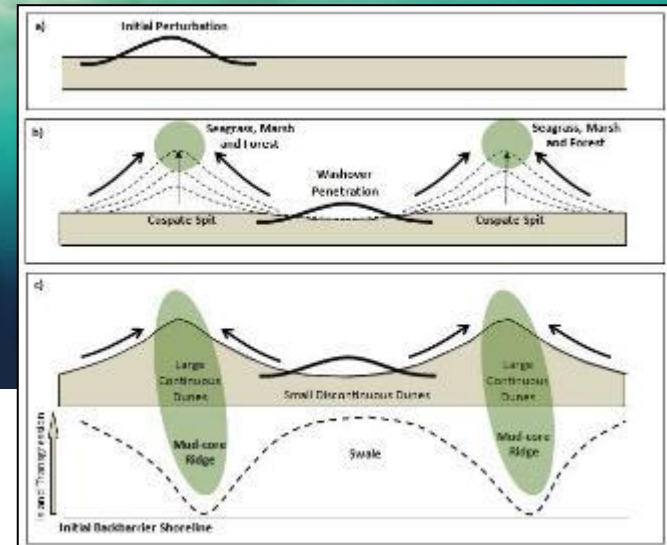
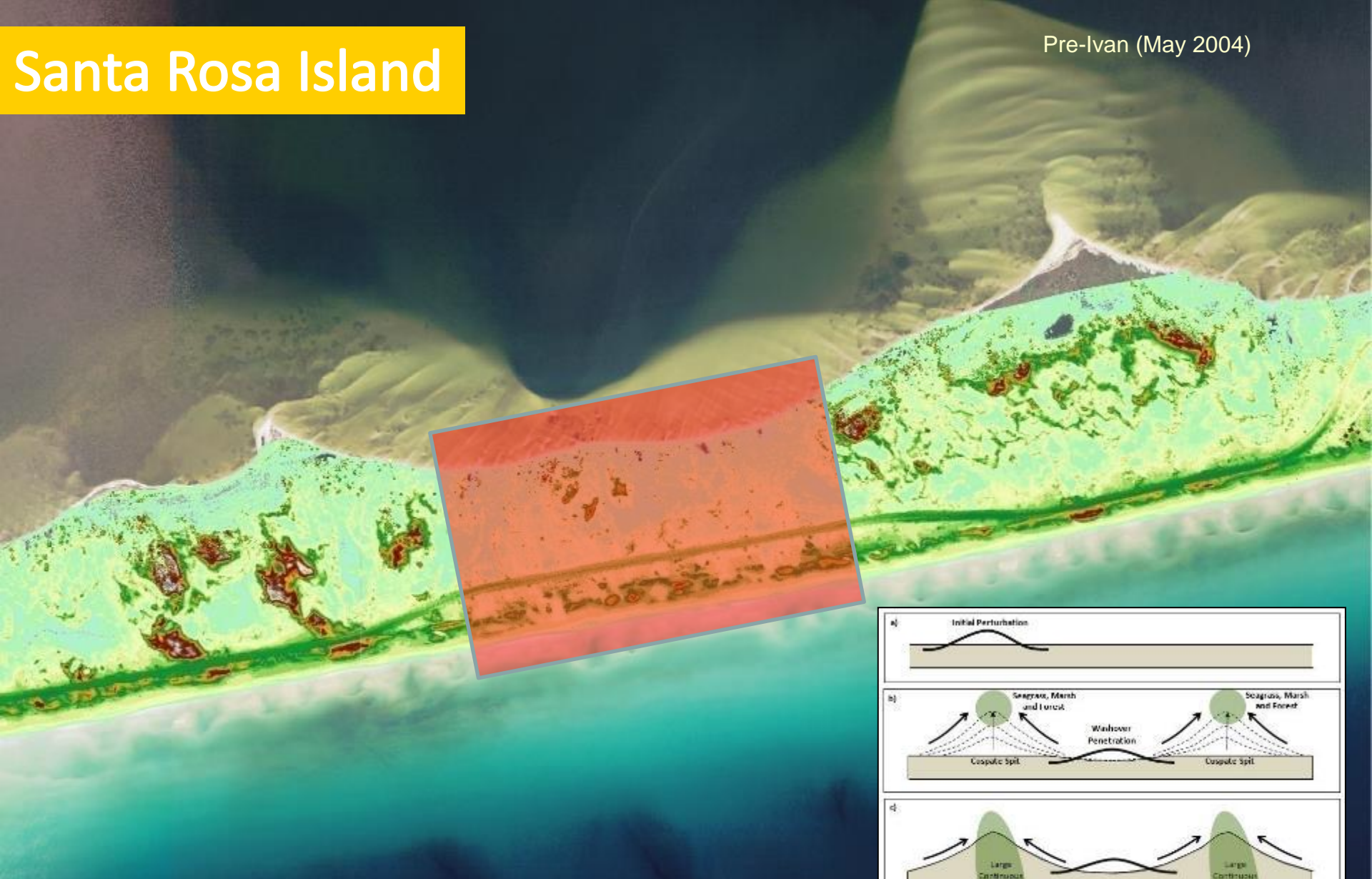
Large-scale post-storm vegetation planting with focus on washover fans



University  
of Windsor  
Faculty of Science

# Santa Rosa Island

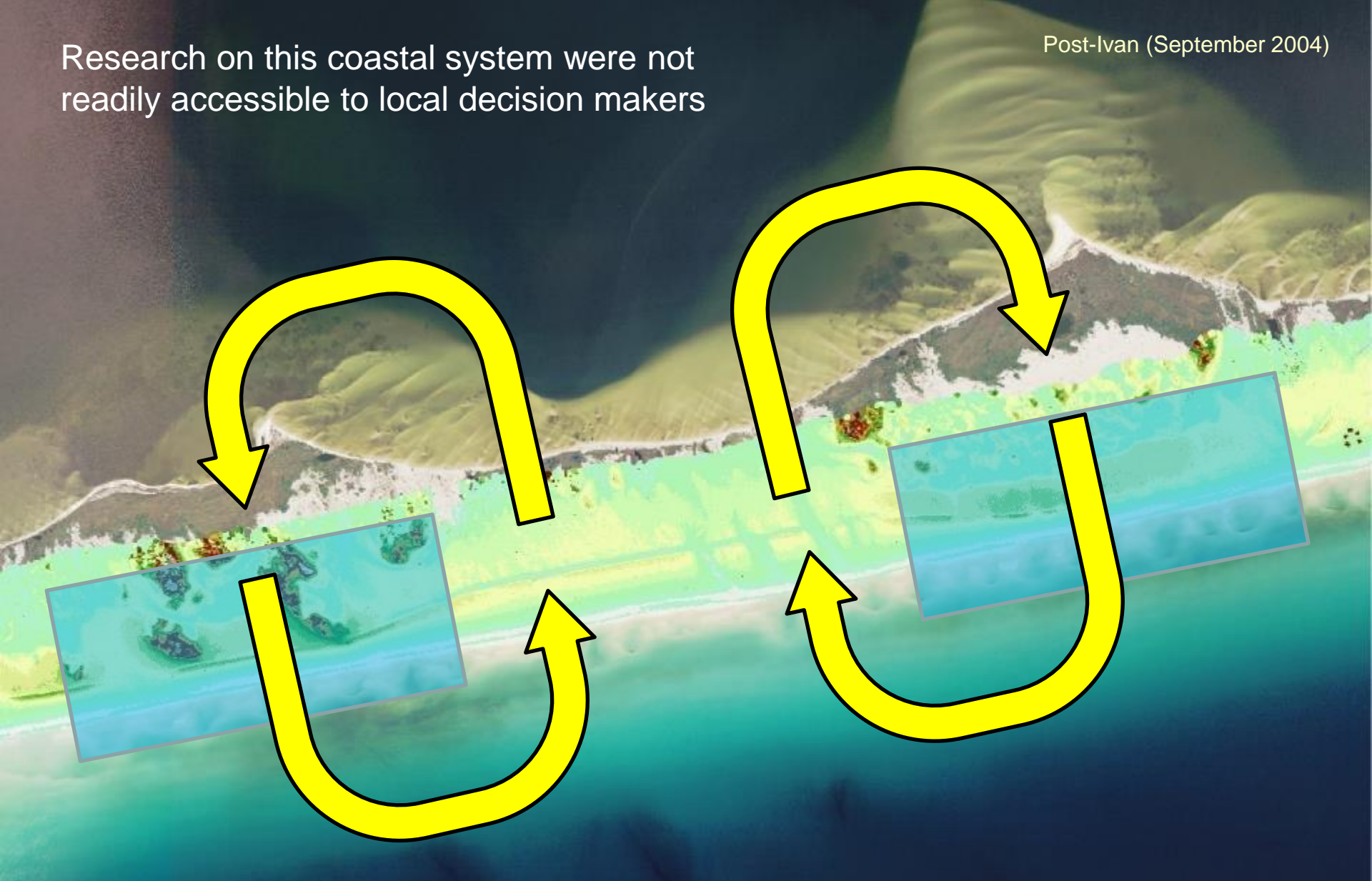
Pre-Ivan (May 2004)





Research on this coastal system were not readily accessible to local decision makers

Post-Ivan (September 2004)

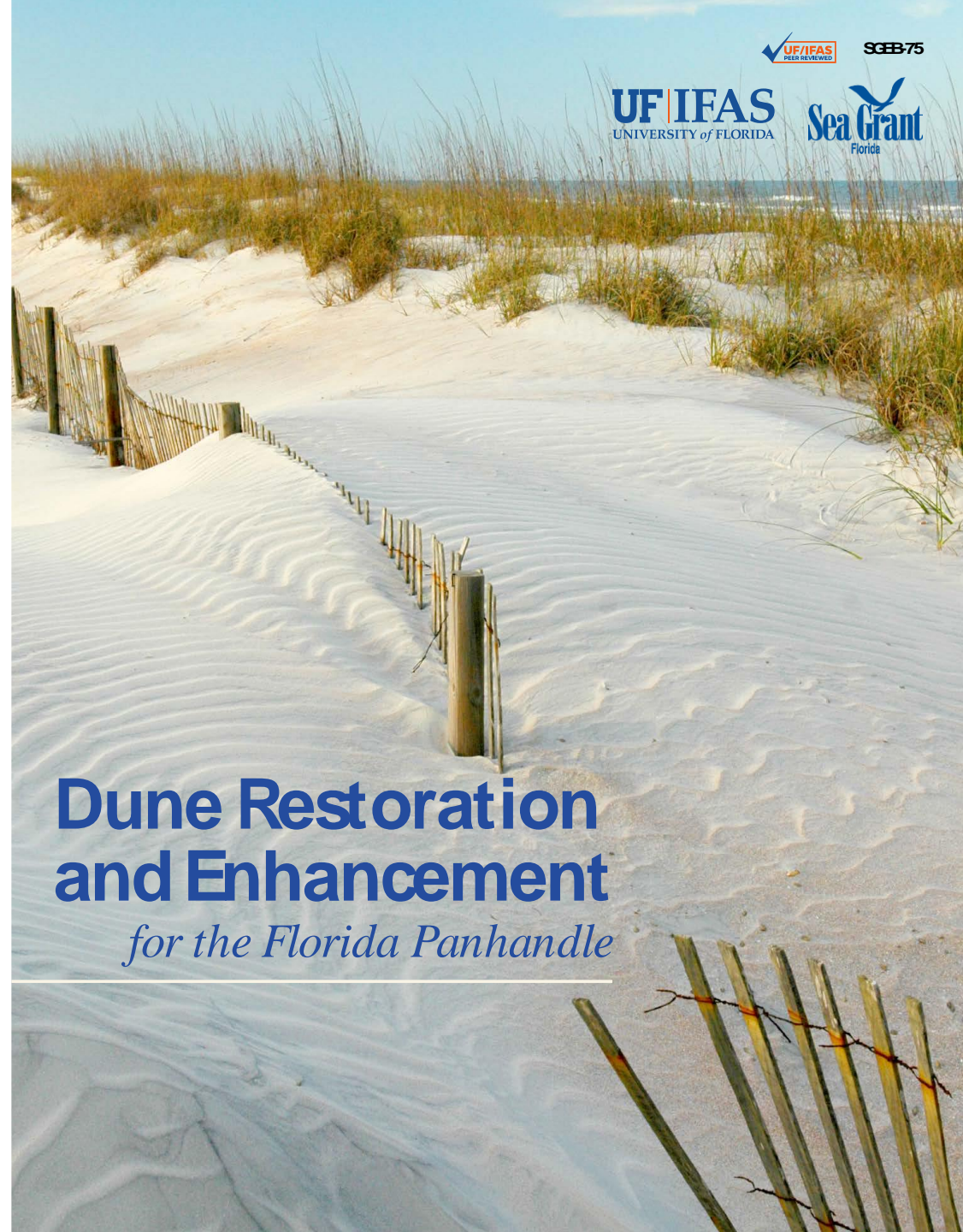


# NBS Best Practices

No recognition of local and regional variations- all sites are considered equal

No reporting from areas of Santa Rosa Island where restoration was not successful and why

**Project timelines and funding were not sufficient for monitoring and dissemination of monitoring results**

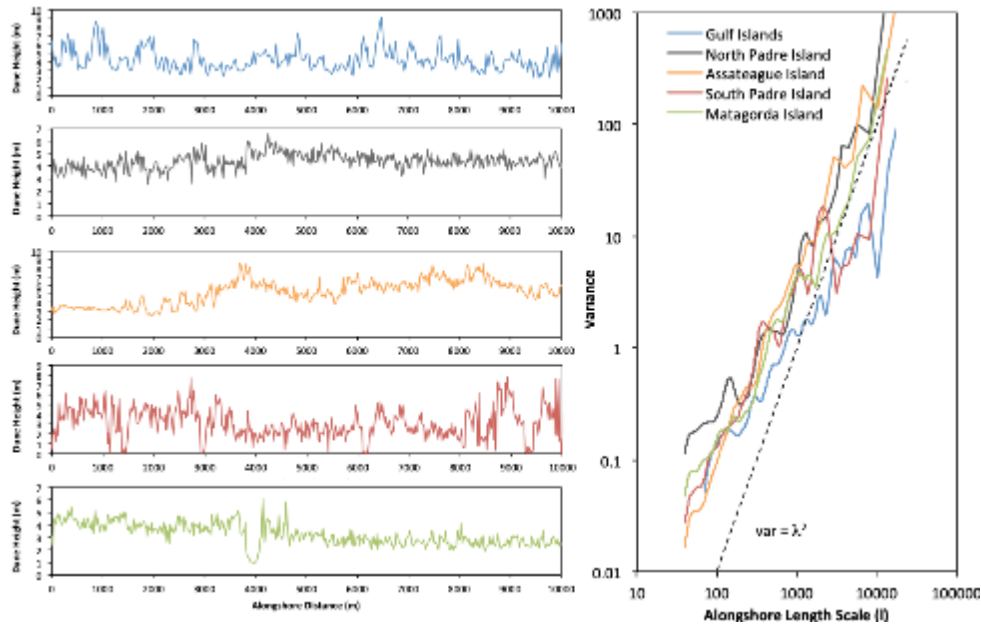


## Dune Restoration and Enhancement

*for the Florida Panhandle*



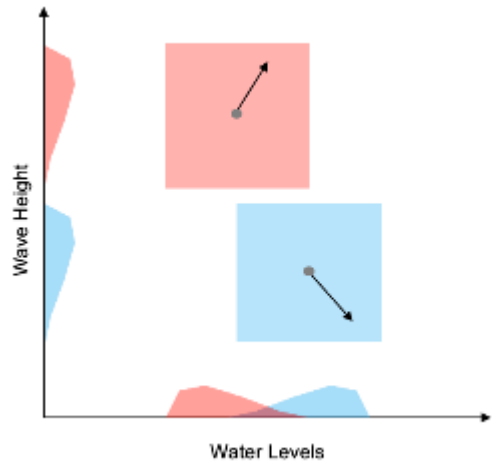
# Representative Sites?



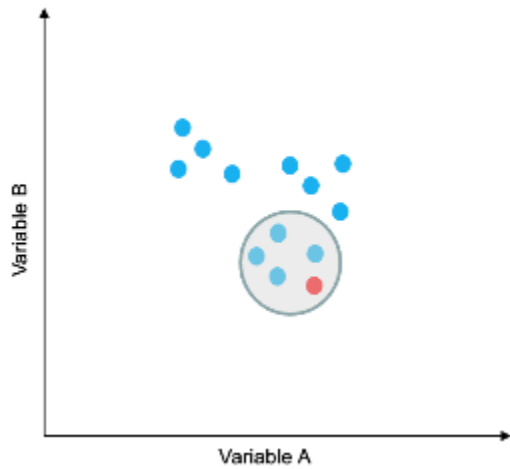
Inter- and intra-site variability and site-specific controls on coastal systems means that there are no 'representative' sites



# Comparing Sites



Is the NBS for **Site A** appropriate for **Site B**?



What other NBS projects are comparable?





# Collective and Coordinated Responsibility

Adaption and success of NBS depends on project monitoring and dissemination

## Pre-Project

Site-specific and scale-dependent data  
Difficulty identifying representative sites

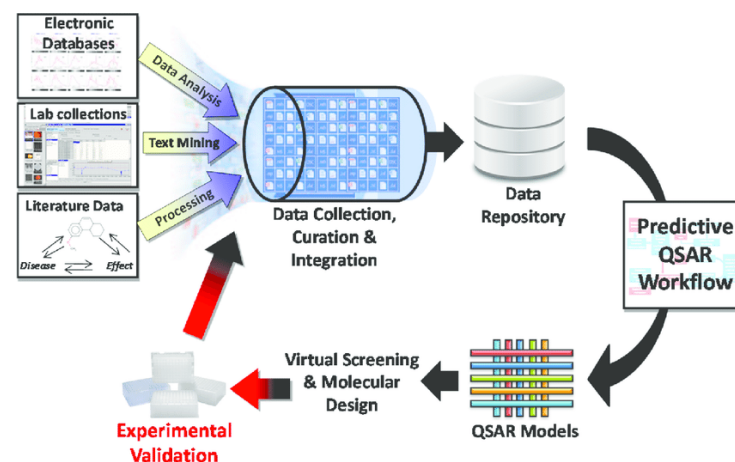
## Post-Project

Limited funding for long-term monitoring  
Lack of an industry-wide database

Successful and widespread monitoring will not happen on a project-by-project basis

Industry-wide collective and coordinated commitment to monitoring

The development and testing of pharmaceuticals is expensive and difficult



Industry-academic partnership to develop a 'drug look-up table' to ensure testing and trial data was effectively shared.

# Roles and Responsibility for NBS Monitoring

Chris Houser  
School of the Environment  
University of Windsor



University  
of Windsor  
Faculty of Science