



XXIII
Council Session
Sesión de Consejo
Session du Conseil



Mérida 2016



Update on Submissions on Enforcement Matters (SEM)

23rd Regular Session of the CEC Council and
JPAC Meetings

Robert Moyer, CEC SEM Director
Paolo Solano, Legal Officer



Status of Submissions

Total of 88 submissions filed before the Secretariat:

30 Canada

45 Mexico

12 United States

1 Canada-United States

5 new submissions since last Council session

22 factual records have been published including Sumidero Canyon in 2015 and Wetlands in Manzanillo in 2016.



Sumidero Canyon II

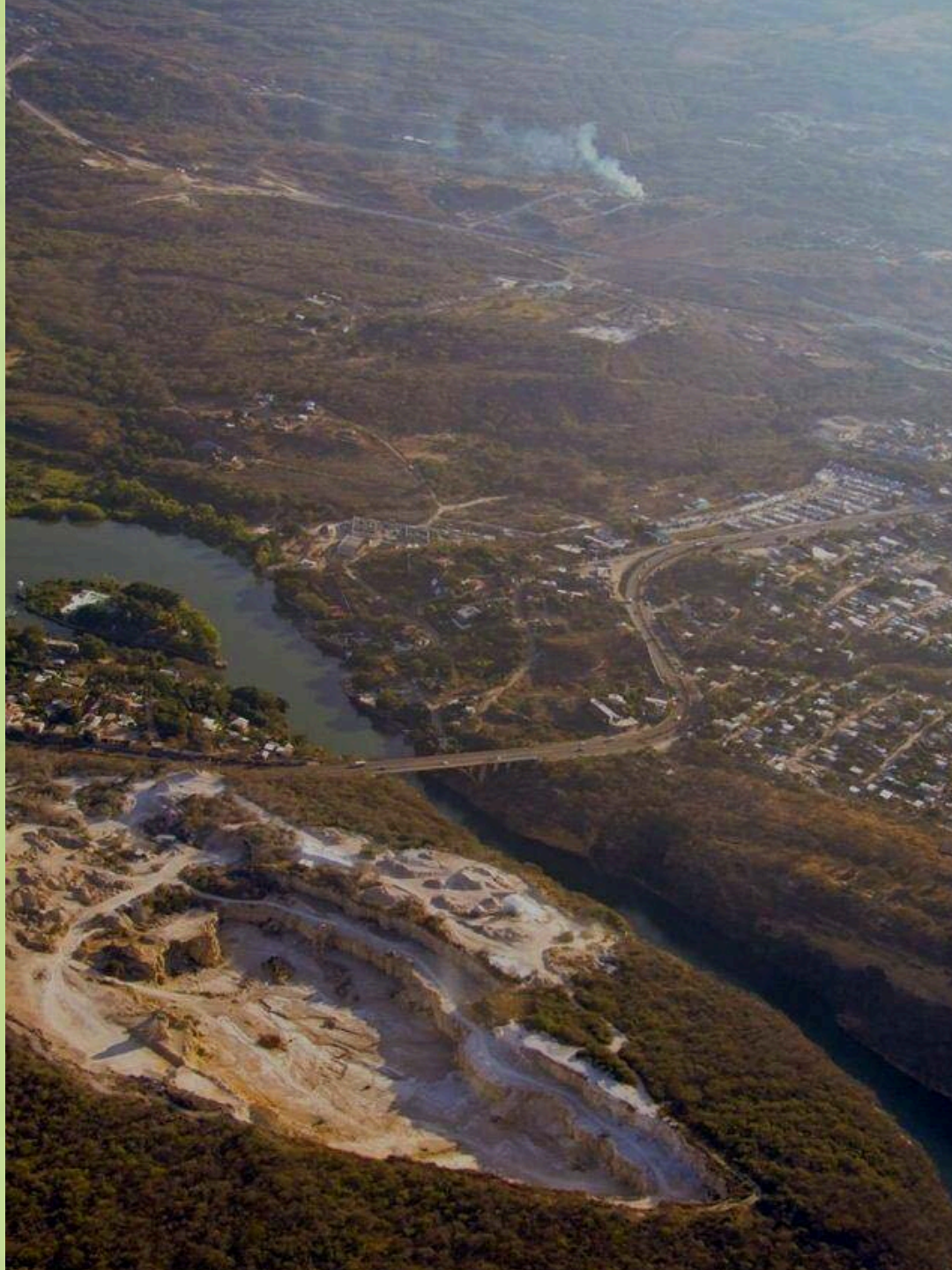


December 2015. The Secretariat published the Final Factual Record on enforcement of laws regarding the operation of a limestone quarry in the National Park.



Sumidero Canyon II

- Limestone quarry opened in 1965
- National Park since 1980
- Incompatibility of the quarry with the Park
- Complaints filed since 2002
- Profepa and Semahn brought actions against the quarry
- Limestone extractions and detonations stopped in December 2013
- Talks continue about the company shutdown





Wetlands in Manzanillo







Wetlands in Manzanillo

Brief Summary of Factual Record:

- **The Projects' relationship with the ecological zoning plans:** The Secretariat found that at the time the EISs for both projects were submitted to the environmental authorities, the projects did not appear to be consistent with applicable ecological zoning plans, although these plans were subsequently modified by local and state authorities so that the Projects were consistent with the authorized uses of the land.
- **The LNG Terminal project's impact on Laguna de Cuyutlán hydrodynamics:** The Secretariat found that, as a result of the Tepalcates Canal expansion to 250 m, water circulation and water exchange in the Cuyutlán lagoon has increased, which —according to experts consulted by the Secretariat— will lead to improved water quality and the site's environmental quality.



New Submissions since 2015 Council Session

Management of Analog TV Waste (Mexico)





New Submissions since 2015 Council Session

La Primavera Forest (Mexico)





New Submissions since 2015 Council Session

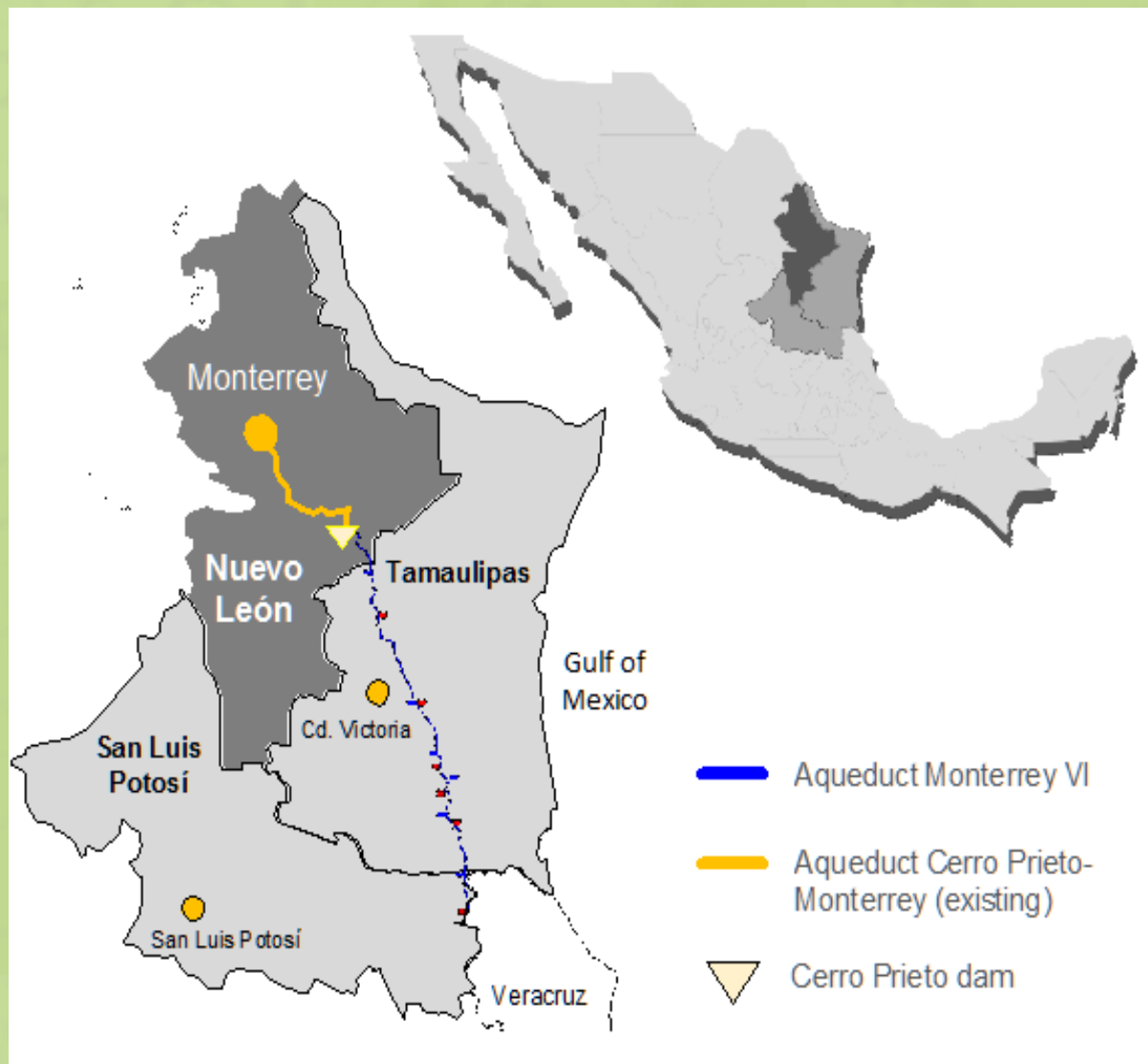
Agricultural Burning in Sonora (Mexico)





New Submissions since 2015 Council Session

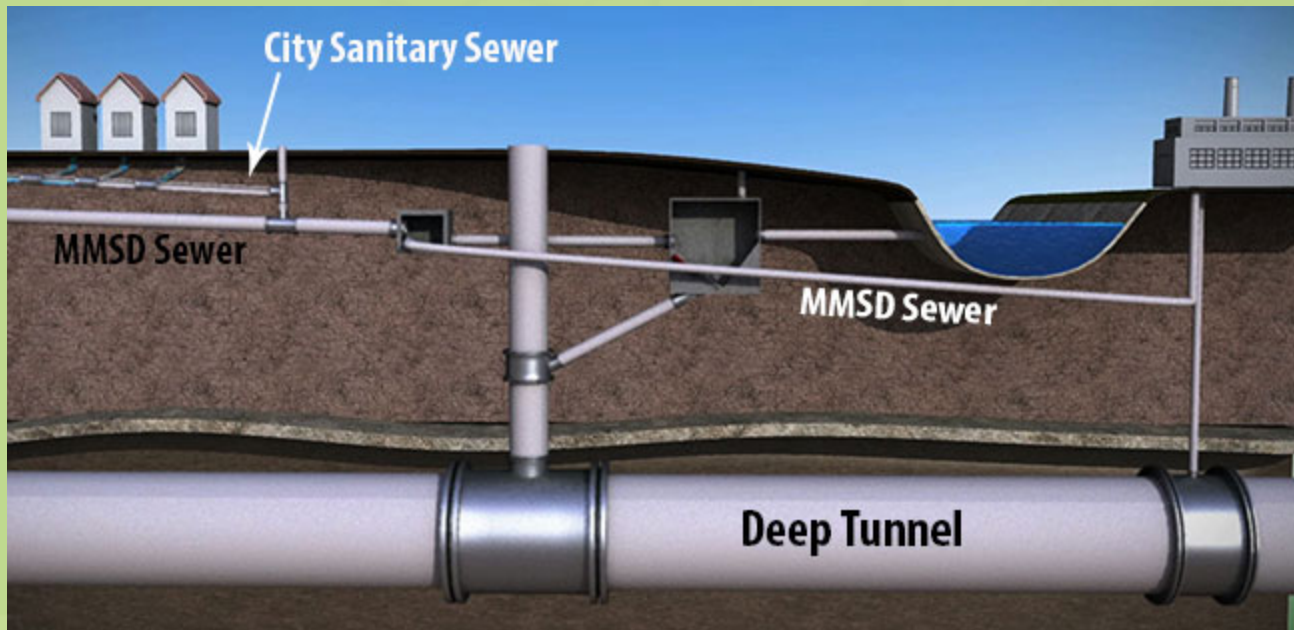
Monterrey VI Aqueduct Project (Mexico)





New Submissions since 2015 Council Session

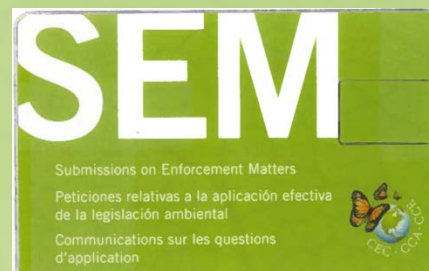
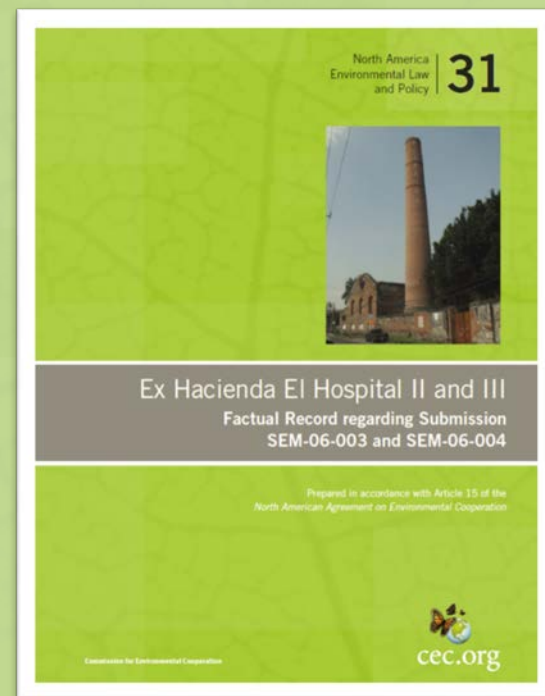
Municipal Wastewater Drop Shafts (United States)





Other Recent Actions taken by Secretariat

- Enhanced visibility of and updated SEM webpage
- Increased targeted outreach activities, including webinars, outreach events, and strengthening relationships with law schools in the three countries
- Continue to develop more accessible factual records
- Continue to process submissions timely
- Produced and published an explainer [video](#) of the SEM Process





Contact the SEM Unit



Robert Moyer

Paolo Solano

Doris Millan

+1 514-350-4304 (Montreal)

sem@cec.org



Three Countries. One Environment.
Tres paises. Un medio ambiente.
Trois Pays. Un environnement unique.