



FEBA

Fédération Européenne
des Banques Alimentaires

EUROPEAN FEDERATION OF FOOD BANKS

World Bank International Workshop on Food Waste and Food Loss

Washington, November 8 – 2016

Jacques Vandenschrik

The European Federation of Food Banks

- A 30 years old umbrella non profit organization
- With memberships in 23 countries bringing together 271 food banks + 50 satellites (end of 2015)
 - National federations
 - Individual food banks
- Which commit to a common set of values and rules of action, “the FEBA Charter”

Vision, Mission

Vision

- For each person in Europe to have access to a sufficient and nutritious food while no surplus food is wasted.

Mission

- To contribute to reducing hunger & malnutrition in Europe through the fight against food waste and the call for solidarity by supporting and developing efficient food banks in countries where they are most needed.

FEBA Charter

Food Banks

- Fight food poverty (hunger/malnutrition) **and** food waste
 - FBs do not raise funds to purchase food
 - When food waste is not available, little place for food banks
- The quality of the distributed food is as important as the quantity
- Run by professionals, primarily volunteer or employees
- Two key assets
 - The volunteers
 - The network of partner charities (community agencies)
- Reliance on public & private organizations to cover the costs of operations:
- Low cost / high return model

FEBA Network

271 Food Banks (+ 50 Satellites) in 23 countries



Poverty or Social Exclusion in the EU

In 2014, 122 million people – 24.4% of the EU-28 population were at risk of poverty or social exclusion.

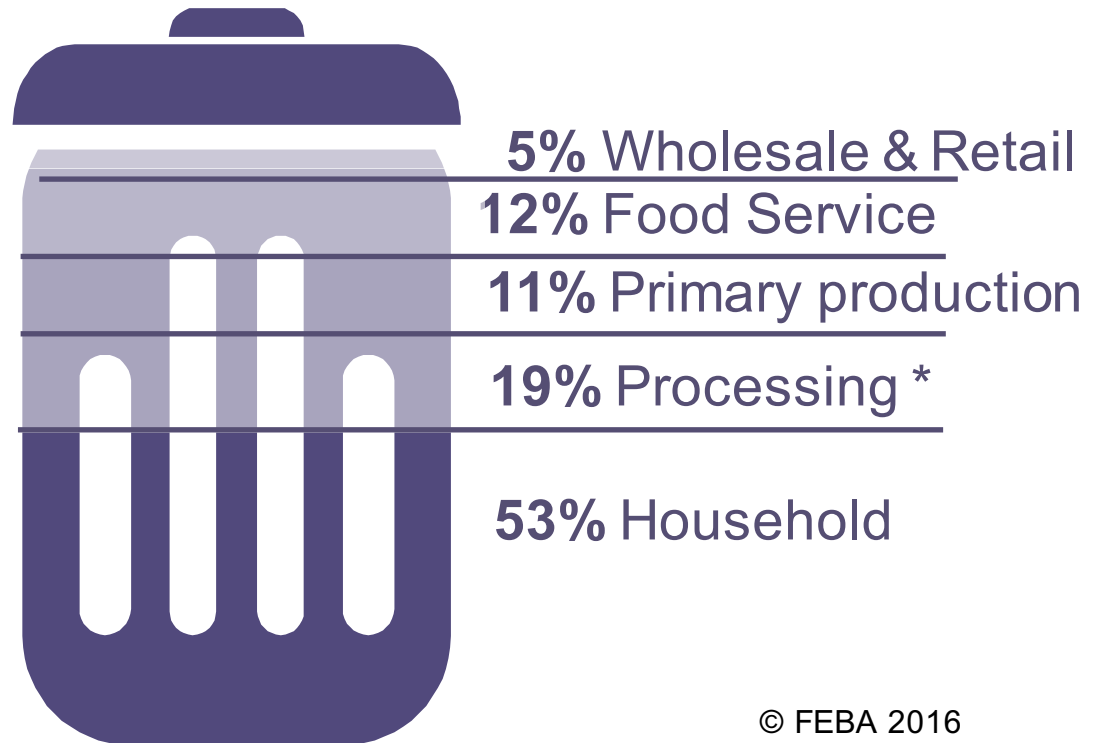
Eurostat – Severely materially deprived people

Food poverty in the EU

In 2014, 48 million – 9.6 % of the EU-28 population could not afford a decent meal meat, fish or other protein-rich every second day.

Food surplus in Europe

EU-28
88 million
tons
of food wasted
every year
173kg/European/year



Source: EU-FUSIONS March 31, 2016

© FEBA 2016

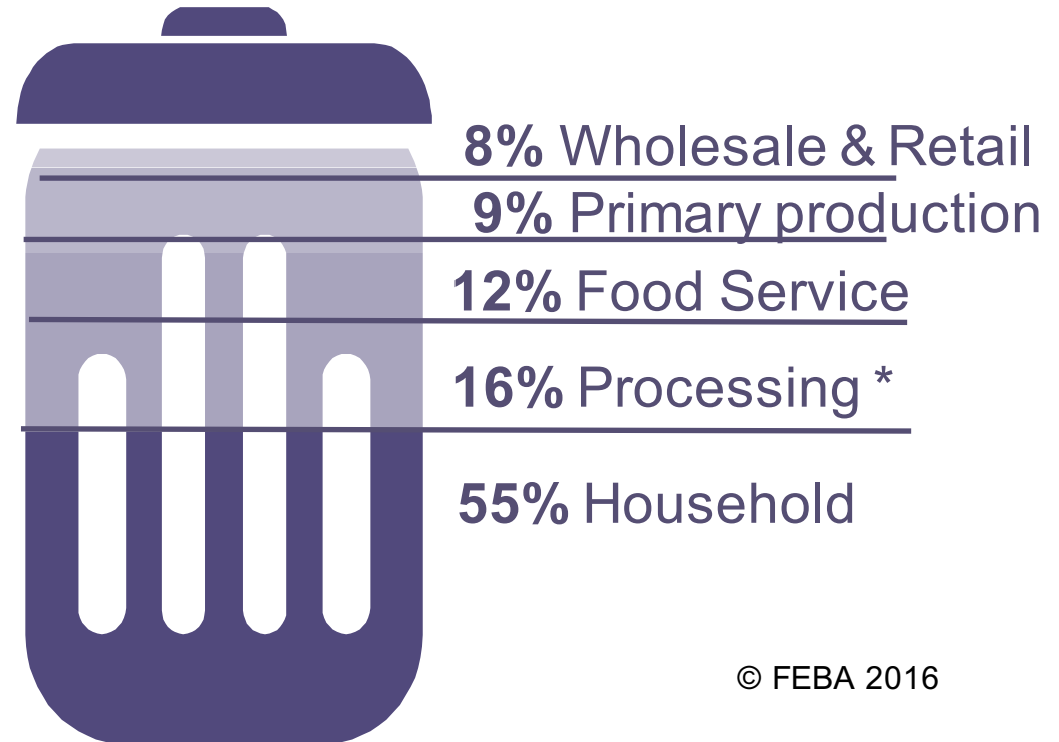
* There is considerable uncertainty around the estimate for the processing sector compared to all the other sectors

Food surplus in Europe – Edible only

EU-28
51 million
tons

**of edible food
wasted
every year**

Source: EU-FUSIONS March 31, 2016



© FEBA 2016

If nothing is done, food wastage will grow 40% by 2020

Source: EU Parliament

* There is considerable uncertainty around the estimate for the processing sector compared to all the other sectors

Edible Food waste in the EU

EU-23 FEBA member countries

23 million tons **edible** food



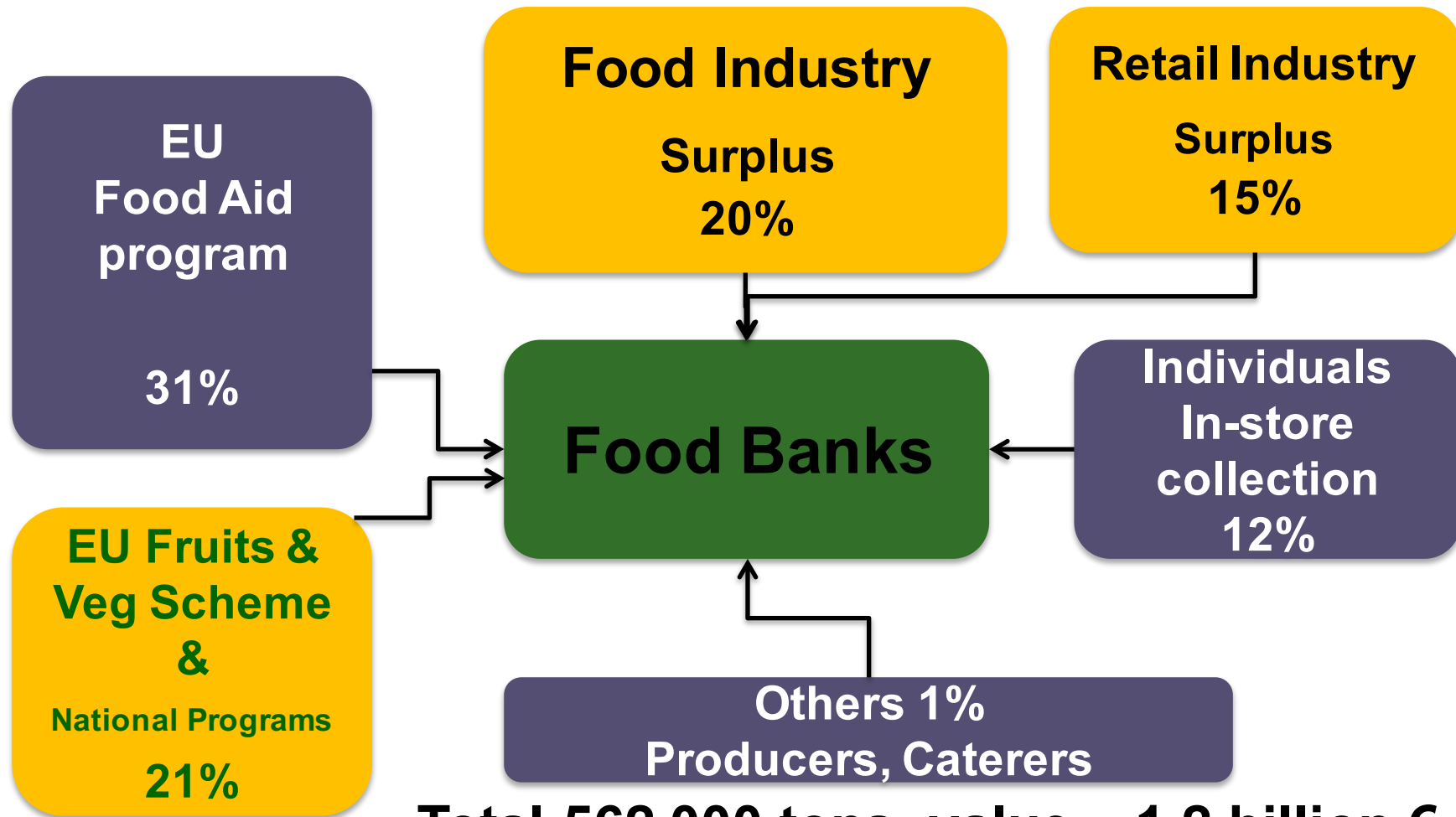
0,3 million tons **rescued** by FEBA
member food banks i.e. **1,3%**

Source: EU-FUSIONS March 31, 2016

Adding other charity organizations would probably lead to a recovery rate of less than **10%**.

* There is considerable uncertainty around the estimate for the processing sector compared to all the other sectors

Food collected - 2015



Total 562 000 tons, value ~ 1,2 billion €

Social Impact of FEBA members - 2015

5,7 million
vulnerable people



1,1 billion meals-equivalent



2,9 million per day

to **33 200 agencies**



**532 K
Tons
of food**

= +/- 1,1 billion



THE WORLD BANK
IBRD • IDA | WORLD BANK GROUP



FEBA

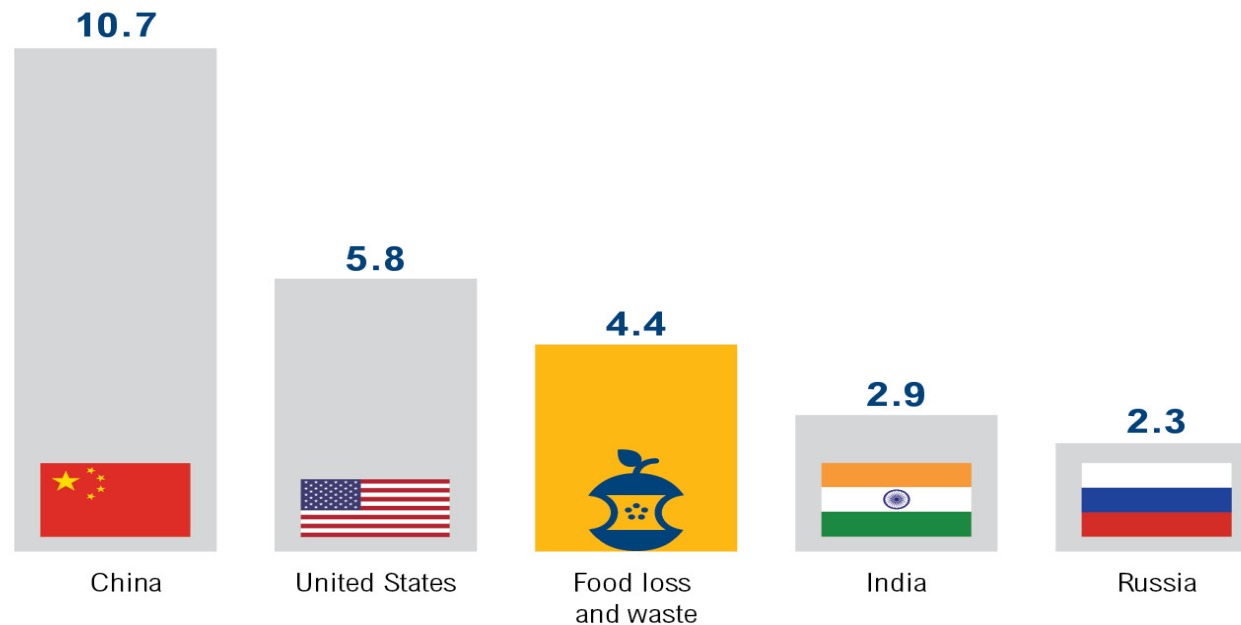


Korea
Green Growth
Partnership



Environmental Impact - 1

If Food Loss and Waste Were its own Country,
it Would Be the Third-Largest Greenhouse Gas Emitter



GT CO₂E (2011/12)*

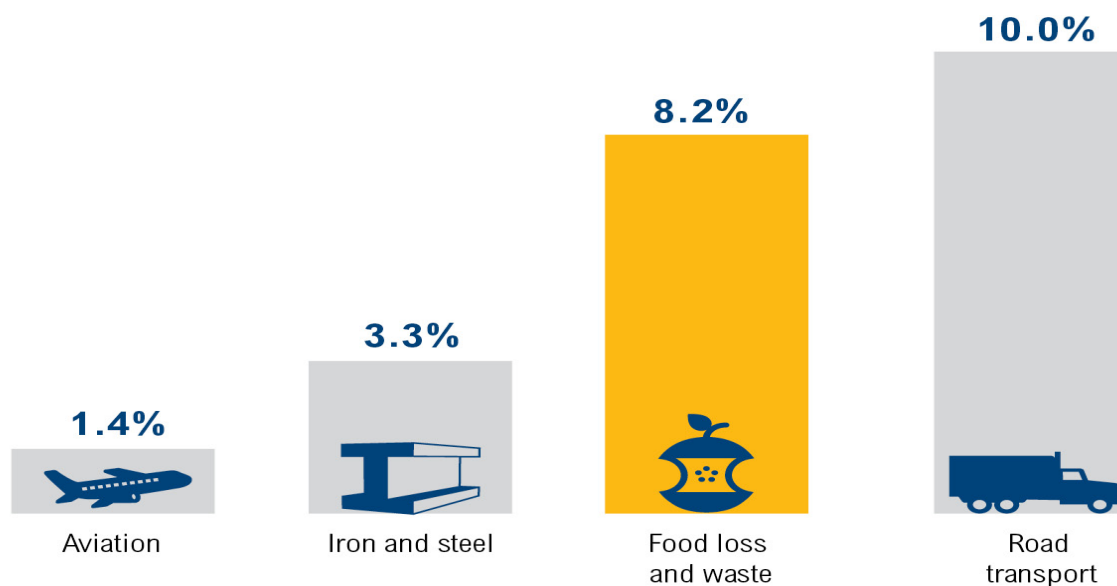
* Figures reflect all six anthropogenic greenhouse gas emissions, including those from land use, land-use change, and forestry (LULUCF). Country data is for 2012 while the food loss and waste data is for 2011 (the most recent data available). To avoid double counting, the food loss and waste emissions figure should not be added to the country figures.

Source: CAIT. 2015; FAO. 2015. *Food wastage footprint & climate change*. Rome: FAO.

 WORLD RESOURCES INSTITUTE

Environmental Impact - 2

Greenhouse Gas Emissions from Food Loss and Waste
Approach the Levels from Road Transport



SHARE OF GLOBAL GREENHOUSE GAS EMISSIONS (2011/12)*

* Sector data is for 2012 while the food loss and waste data is for 2011 (the most recent available). Since the food loss and waste data combines emissions from various lifecycle stages of the food that is ultimately lost or wasted (e.g., road transport, landfills), the food loss and waste figure should not be added to the sector figures in order to avoid double counting.

Source: International Energy Agency (IEA). 2014. *CO₂ Emissions from Fuel Combustion* (2014 edition). Paris: OECD/IEA; WRAP. 2014. *Strategies to achieve economic and environmental gains by reducing food waste*. Banbury, UK: WRAP; FAO. 2015. *Food wastage footprint & climate change*. Rome: FAO.



WORLD RESOURCES INSTITUTE

Environmental Impact FEBA - 2015

5,7 million
vulnerable people



1,1 billion meals-equivalent



2,9 million per day

@ 1.06Kg CO₂e / person / day (1)
= 6,050 Tons CO₂e / day
= 2.21 Billion Tons CO₂e / year

Environ Health: 2016 Feb 9;15:15. doi: 10.1186/s12940-016-0110-7.

Diet-related greenhouse gas emissions assessed by a food frequency questionnaire and validated using 7-day weighed food records. - Allowance is made for rescued food / total food aid / 1 meal = 50% of diet.



THE WORLD BANK
IBRD • IDA | WORLD BANK GROUP



FEBA



Korea
Green Growth
Partnership



The European Federation of Food Banks (FEBA) Activities

- **Represent food banks vis-à-vis EU institutions & civil-society organizations** to maintain efficient food aid programs and lift obstacles to donations.
- **Support the creation & development of food banks** in compliance to the FEBA Charter.
- **Facilitate knowledge / skill and experience sharing** among Members to disseminate innovation & strengthen the professionalism of the volunteers
- **Build partnerships** with global companies to source food, services and funding to member food banks in more countries.



EU Food Related Programs (1)

1- European Fund Aid for Deprived “FEAD”

- General goal: promoting social cohesion by contributing to achieving the EU 2020 poverty reduction target
- Specific goal: alleviating the worst forms of poverty by providing assistance to the most deprived persons
 - Material assistance of which food or non material assistance = social inclusion activities
- 2014-2020; 3,8B€ + 0,6B€ co-financing by MS (mandatory)= 640 M€/ year
- Managed by EU Commission-DG Employment and Member States
- Type of assistance, target groups, distributing “partner organizations” defined by MS (National operating Programs)
- 2015 ~ 480 M€ food (~ 480 000 tons surplus + purchases). 8 FEBA members distributed ~ 30%

EU Food Related Programs (2)

2- European Fruits & Vegetables withdrawal program

- Market regulation instrument
- Managed by EU-DG Agriculture & Member States
- As part of this program, when farmers' organizations withdraw products (16 types) and donate them for free to charitable organizations, they receive a financial compensation.
- Much smaller and unstable funding
- Special measures in 2015 & 2016 in relation to the Russian ban on EU imports.
- 2015 ~ 120 000 tons received by 9 FEBA members

Challenges

- Growing demand for food... coupled with social inclusion programswhile EU food aid program is reduced, as are public welfare benefits & grants to charities.
 - New types of vulnerable people
 - Unsatisfied needs for quality food in developing countries
- Finding the right professionals to supervise and to run foodbanks in countries with few volunteers and minimum public support.
- Getting funds to build food bank's capacity – Equipment – Storage – Training
- Lifting obstacles to surplus food donations in several European countries
 - Regulations – date labelling, food safety
 - VAT, tax incentives, competitive subsidies
- Adapt the traditional food bank model to new society conditions and realities, but keep the original food banking spirit in the whole food banking movement.
- Establish meaningful relationship with poverty fighting agencies.

In conclusion

FACTS

- RECOVERABLE FOOD WASTE IN EUROPE = 51 M TONS/YR
- NUTRITIOUS FOOD IS NEEDED FOR 48 M NEEDY PERSONS
- RECOVERABLE FOOD IS = 1000 KG / YR / NEEDY PERSON....

BUT

- WE BUY FOOD TO HELP THE NEEDY....

WE BELIEVE THAT MONEY WOULD BE BETTER SPENT IF RESCUING WASTE FOOD WOULD BE MORE ENCOURAGED AND SUPPORTED (FOOD BANKS CAPACITY BUILDING)

THE PURCHASE OF FOOD SHOULD IN DUE TIME BE AIMED SOLELY AT COMPENSATING FOR QUALITATIVE SHORTCOMINGS IN FOOD PROVISION TO THE NEEDY

FEBA SALUTES THE WORK DONE BY THE WORLD BANK AND ASSOCIATES AND I THANK YOU FOR YOUR ATTENTION.