



Sustainable Energy and Climate Change: California's Experience

Karen Douglas

Commissioner

California Energy Commission

Commission for Environmental Cooperation of North America

April 23, 2015



California's Existing Energy Goals

- Reduce greenhouse gas emissions to 1990 levels by 2020
- Reduce greenhouse gas emissions 80% below 1990 levels by 2050
- Generate 33% electricity from renewables by 2020



Governor Brown's 2030 Targets

By 2030

- 50% of electricity from renewable sources
- Double energy efficiency in existing buildings
- Reduce petroleum use by 50%
- Reduce release of methane, black carbon and other potent pollutants across industries
- Manage natural and working lands to help store carbon





Coordinating with Mexico

Memorandums of Understanding (July 2014)

- Clean Energy
- Climate Change and the Environment
- Trade and Investment
- Education, Research and Scholarly Activities





Shared Resources with Mexico

- Electricity Infrastructure & Relationships
- Electricity Grid
- Energy Providers
- Generation



Termoelectrica de Mexicali (625 MW natural gas combined cycle power plant in Mexicali)



Energía Sierra Juarez (up to 1,200 MW wind project in La Rumorosa)



Renewable Energy in California





Desert Renewable Energy Conservation Plan (DRECP)

Long-term adaptable plan

- Cover 22.5 million acres California desert
- Conserves sensitive species
- Conserves other resources
- Streamlines renewable energy project review and approval



The DRECP will...

- ▶ Help California and the nation meet renewable energy and greenhouse gas emission reduction goals.
- ▶ Identify areas appropriate for renewable energy development and coordinate state and federal environmental review and permitting process.
- ▶ Identify conservation areas for sensitive cultural resources, plant and wildlife species and provide a framework for adaptive management in the face of climate change.



DRECP Plan Area

Seven Counties

- Imperial
- Inyo
- Kern
- Los Angeles
- Riverside
- San Bernardino
- San Diego

22.5 million acres

Federal and non-federal
lands





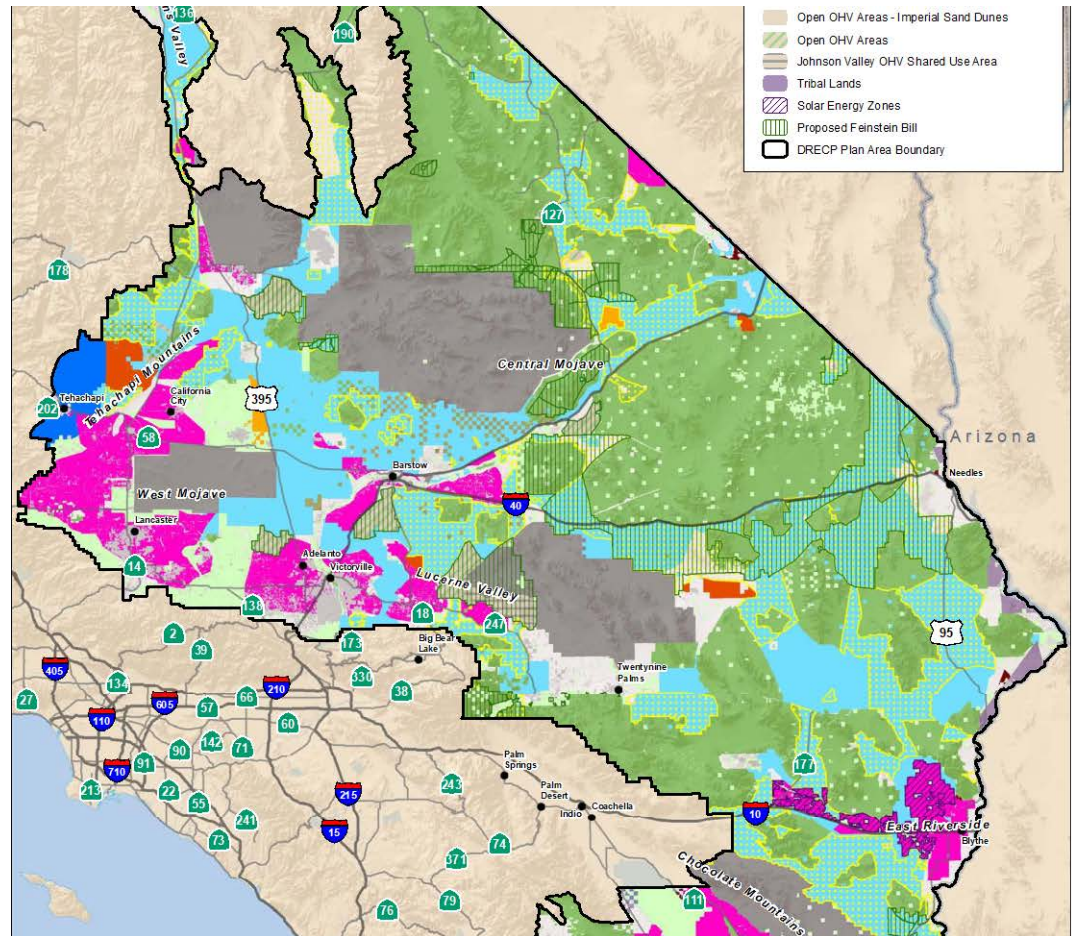
Draft DRECP Preferred Alternative

Development
Focus Areas

Existing
Conservation

BLM
Conservation
Lands

Conservation
Planning Areas



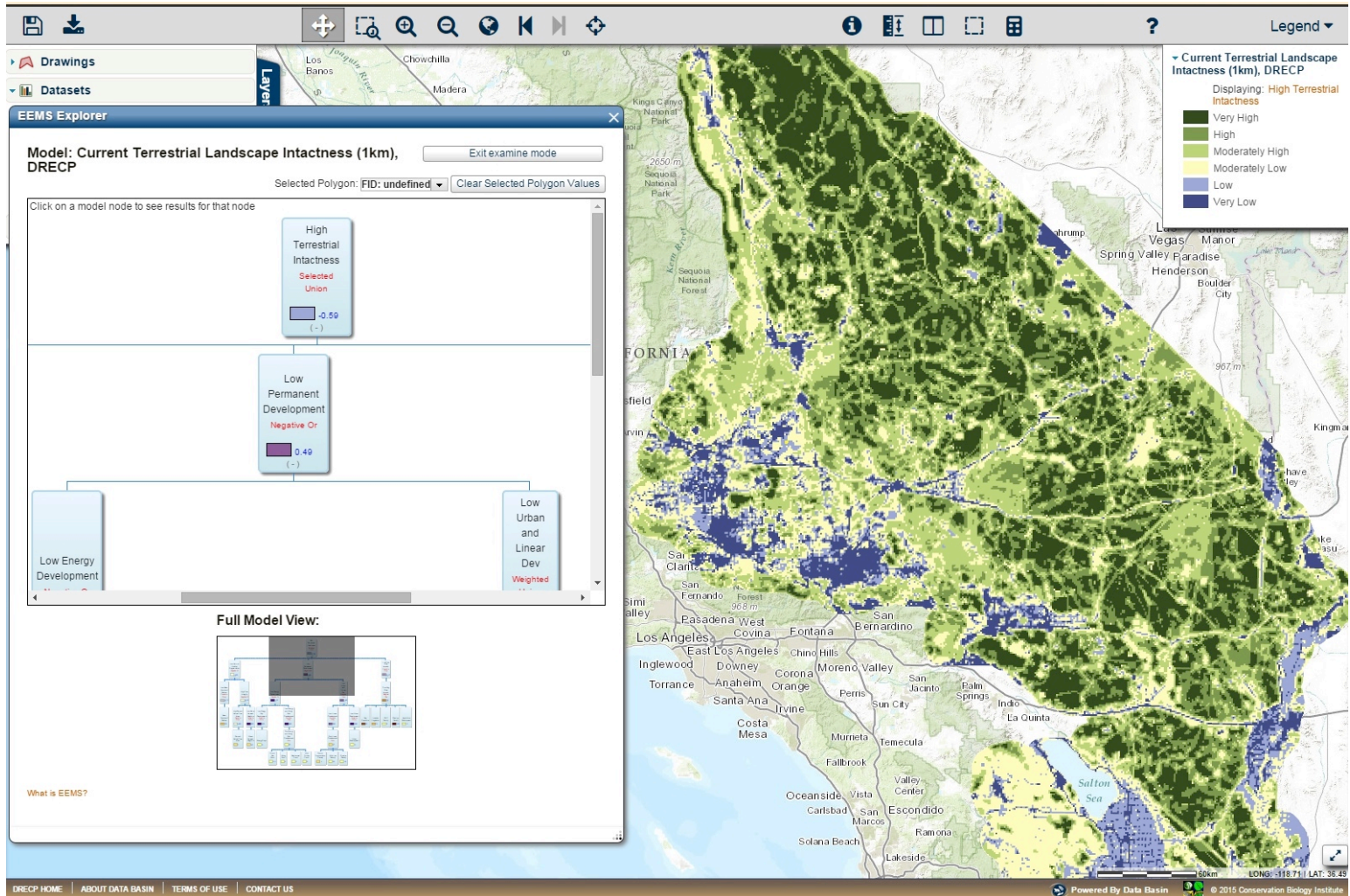


DRECP Gateway: Data Basin

The screenshot shows the DRECP Gateway website in a browser window. The browser address bar displays "drecp.databasin.org". The website header includes the title "DESERT RENEWABLE ENERGY CONSERVATION PLAN GATEWAY" and a search bar. Below the header is a navigation menu with "Get Started", "Explore", "Create", and "My Workspace". The main content area features a large image of a desert landscape with a Joshua tree. To the left of this image are three questions: "What is the DRECP gateway?", "How is the gateway organized?", and "How do I provide my comments on the Public Draft DRECP and EIR/EIS?". Below these questions is a section titled "Biological Goals and Objectives & Conservation Management Actions" with a detailed paragraph. To the right of this text is a grid of four images: "DRECP Alternative Maps for Public Review", "DRECP Selected Maps for Public Review - Volumes III & IV", "DRECP Selected Maps for Public Review - Appendix C, H, & R", and "DRECP Administrative Draft - Datasets from Volume II". At the bottom of the page, there is a visitor count "Number of Visitors to the DRECP Gateway: 2,759" and a notice about the public comment period for the draft DRECP EIR/EIS ending on February 23, 2015. The footer contains links for "DRECP HOME", "ABOUT DATA BASIN", "TERMS OF USE", and "CONTACT US", along with a copyright notice for the 2015 Conservation Biology Institute.

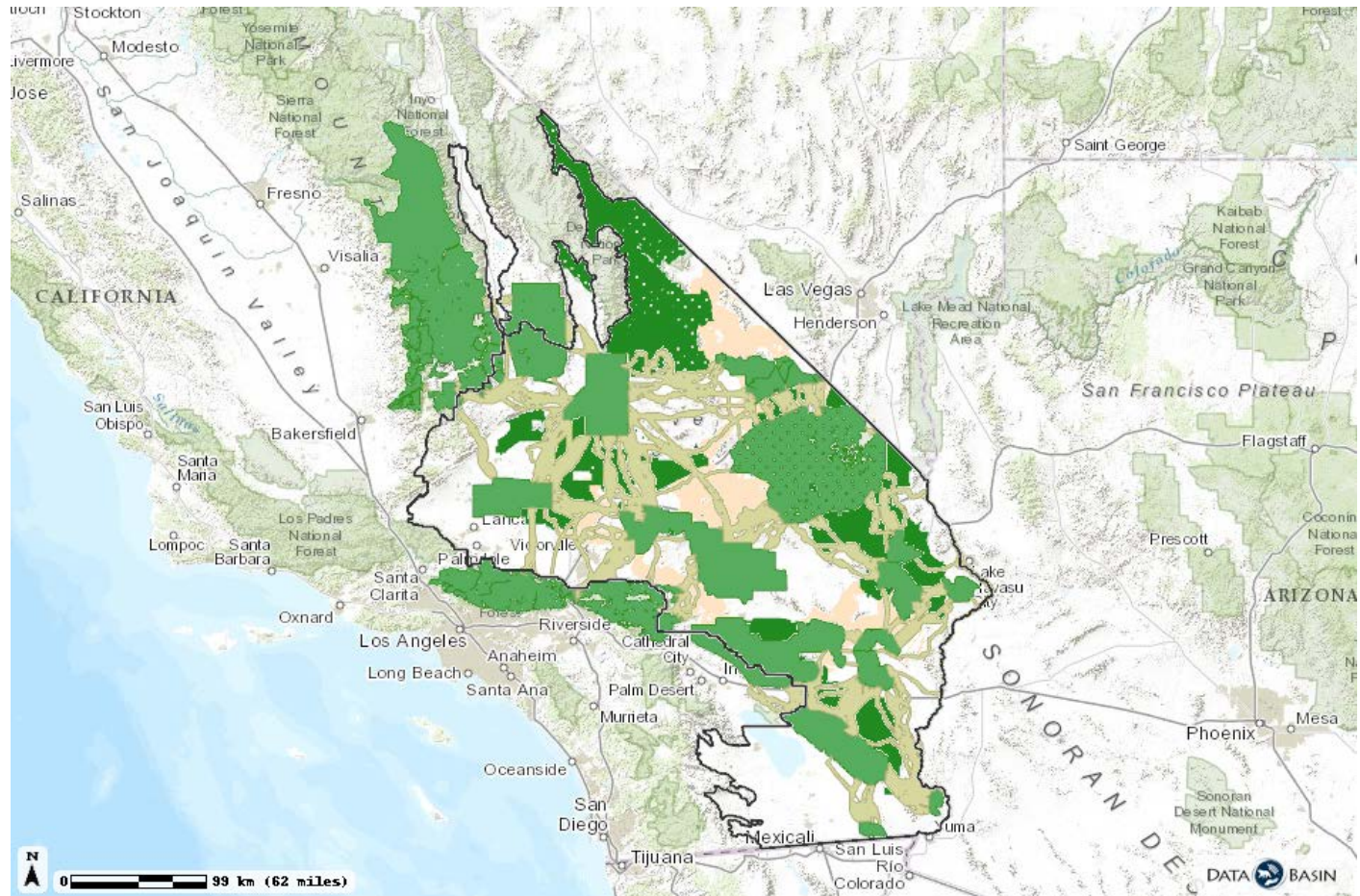


DRECP - Landscape Intactness Model



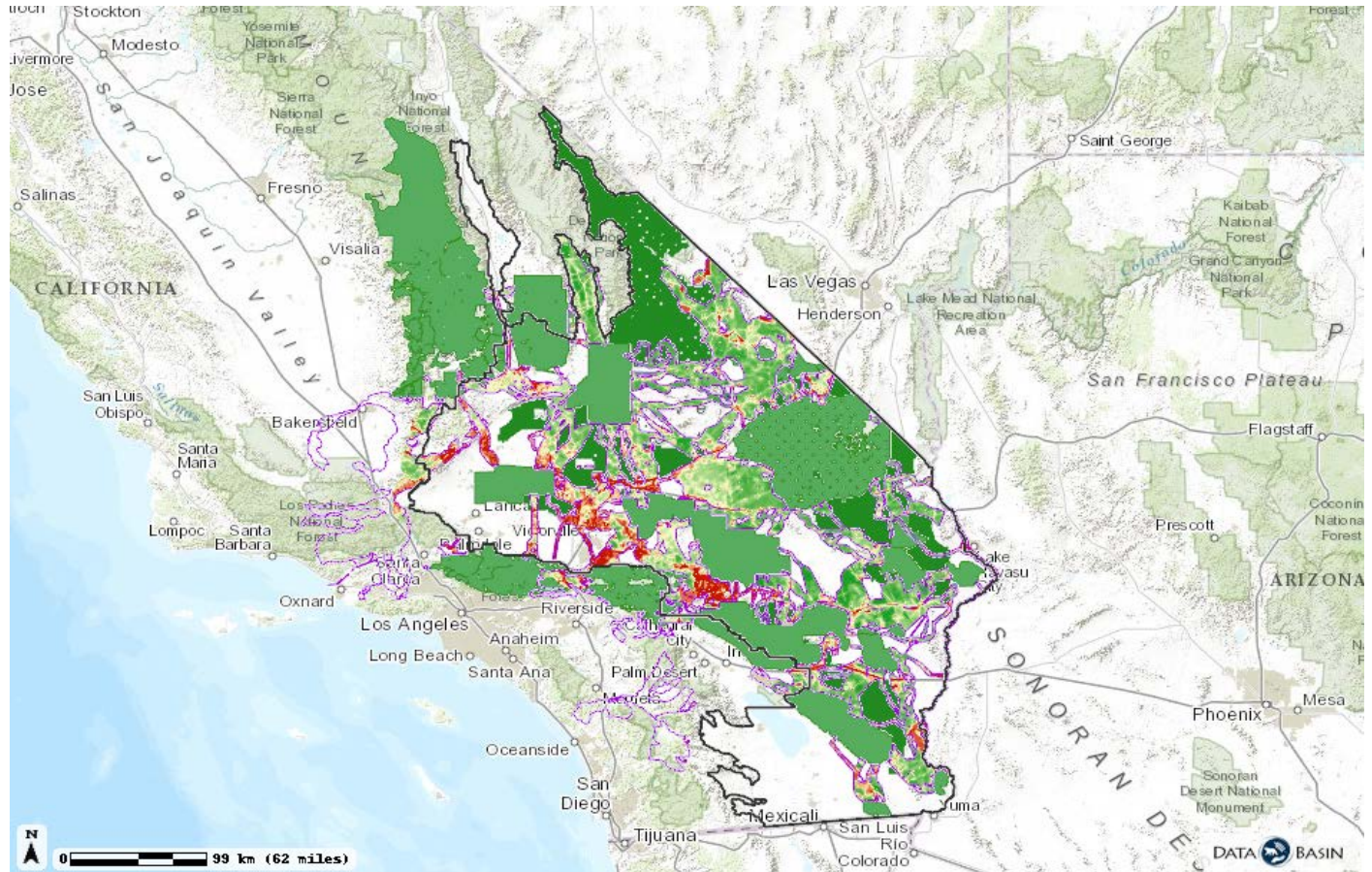


DRECP Linkage and Connectivity



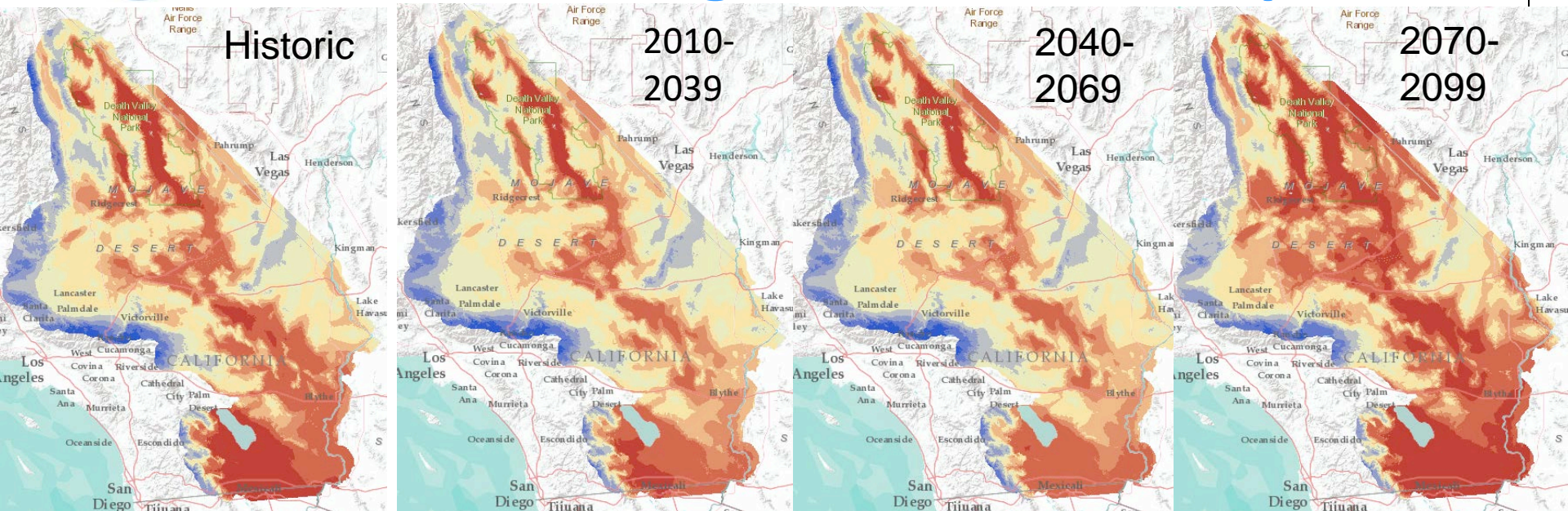


DRECP Linkage Condition

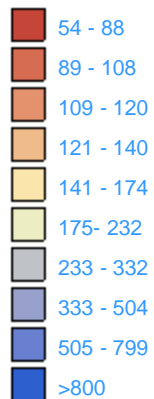




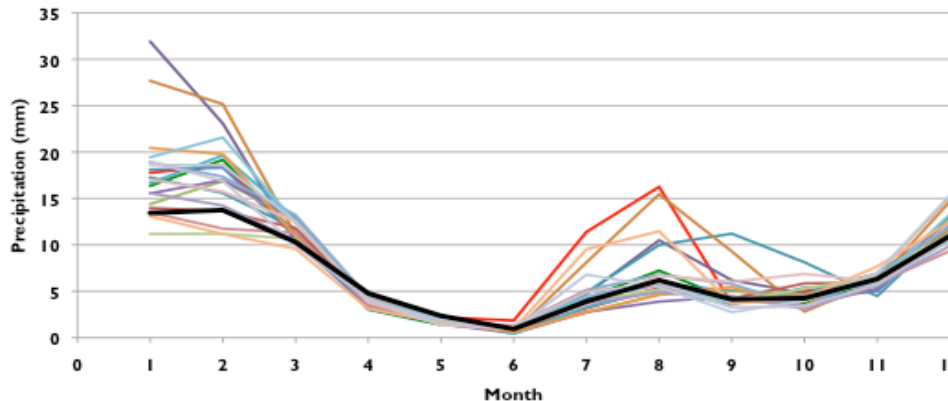
Climate Change – Annual Precipitation



MM



RCP 8.5

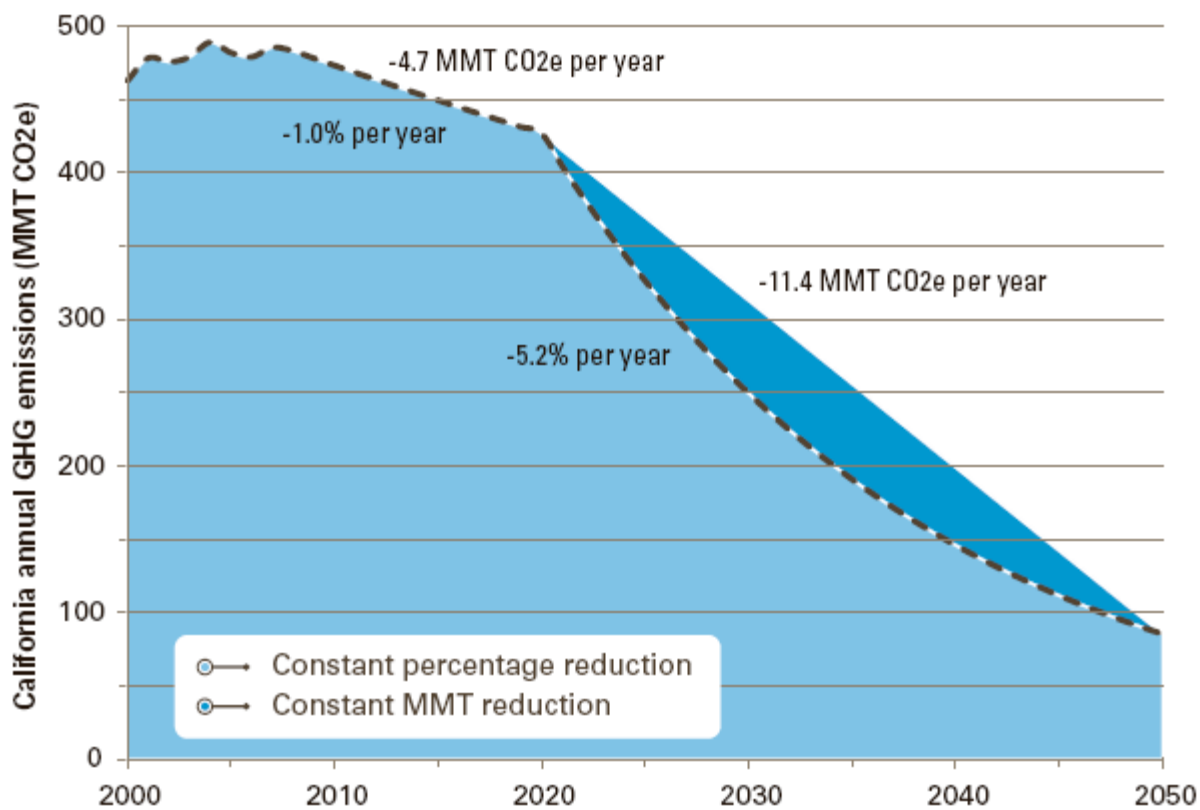


← Wetter Forecasts
 ← Historic
 ← Drier Forecasts



Emissions Trajectory to 2050

Pre-2020 and Post-2020 emissions trajectories





Contact

Karen Douglas

Karen.Douglas@energy.ca.gov

(916) 654-4001